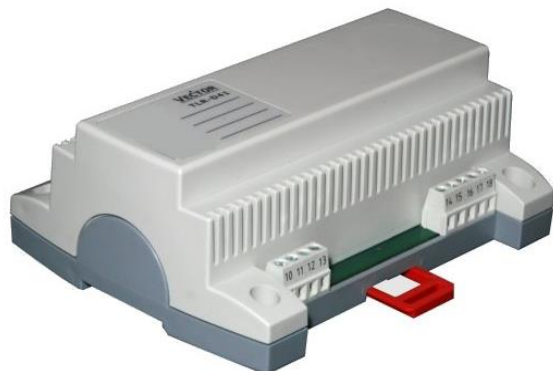


TCX2-14050-BAC, TCX2-14050-120-BAC Communicating Cabinet/Box Mounted VAV Controller



TCX2-14050-BAC



AEC-PM1



OPU2-VC

Features

- BACnet™ MS/TP communication over RS485
- BACnet™ B-ASC device profile
- RS485 bus communication with remote operation terminal OPU2-VC.
- 1 Universal PI and/or binary control loop
- Multiple auxiliary functions: heat-cool auto changeover, automatic enable, set point compensation.
- Free heating or cooling with economizer function based on enthalpy or temperature.
- Differential, averaging, min and max functions
- 8 free assignable alarm or interlock conditions, Selectable state of each output on alarm condition.
- Functions for dehumidifying, set point shift and many more.
- Password protected and lockable settings.
- Annual and 7-day programmable schedules for change of operation mode, setpoints and position of manual outputs. Note: no real time clock included. Time need to be synced every 24 hours.
- Clone parameter sets with plug-in memory AEC-PM1 – easily transport application parameters to multiple controllers.
- Program and monitor using free pc software: EasySet!

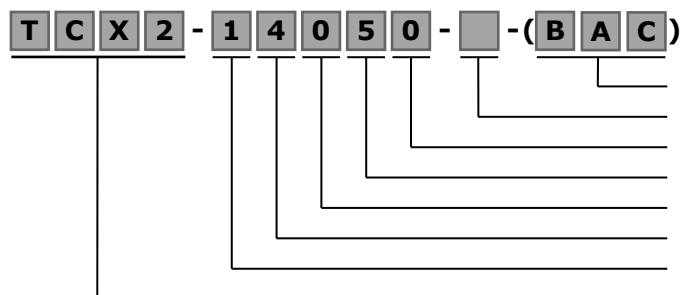
Applications

- Fan coil units
- Fan, Pump control
- Ventilation
- Underfloor fans

General

- The TCX2 is a programmable electronic universal controller with communication capabilities. Each control loop may use 2 PI sequences and 6 binary stages. The TCX2 comes with a built in RS485 communication interface that allows peer to peer communication with an operation terminal e.g. OPU2-(2TH)-VC or a PC.
- The controller communicates on a BACnet™ MS/TP network over RS485. This controller is suitable for a large variety of applications such as zoning applications residential and commercial, air handling units, economizers etc.
- Flexible application configuration is made with a parameter-setting routine using the standard operation terminal.
- Complete parameter sets may be copied by use of an accessory called AEC-PM1 or exchanged with a PC using an RS485-USB converter and the EasySet program.

Name



Com:	Communication standard, MOD or BAC
Power:	Blank or 24 = 24VAC, 230 = 230VAC
# AO:	0 Analog outputs
# DO:	5 Binary outputs
# UI:	0 Analog inputs
# DI:	4 Passive inputs
# LP:	1 control loop
Series:	TCX2


Ordering

Model	Item#	Display	Loop	Inputs	DO	AO	Description
TCX2-14050-BAC	40-11 0084	no	1	4 NTC,	5 Relays		Controller 24 VAC/DC with BACnet® MS/TP
TCX2-14050-120-BAC	40-11 0106	no	1	4 NTC	5 Relais		Controller 120 VAC with BACnet® MS/TP
OPU2-VC	40-50 0021	Yes	-	1T	-	-	Operation terminal
OPU2-2TH-VC	40-50 0025	Yes	-	1T+1H+2			Terminal with TH + 2 passive inputs
OPT-2-VC	40-50 0098	Yes		1NTC 1V			Terminal with touch screen, 1NTC+1VDC input
AEC-PM1	40-50 0016	-	-	-	-	-	Plug-In memory module
AEX-MOD	40-50 0013	-	-	-	-	-	Modbus communication module
AEX-BAC	40-50 0044	-	-	-	-	-	BACnet MS/TP communication module
AMM-1	40-51 0022	-	-	-	-	-	Accessory for cabinet door mounting
AEC-USB-01	40-50 0046	-	-	-	-	-	Accessory to exchange parameter set with PC

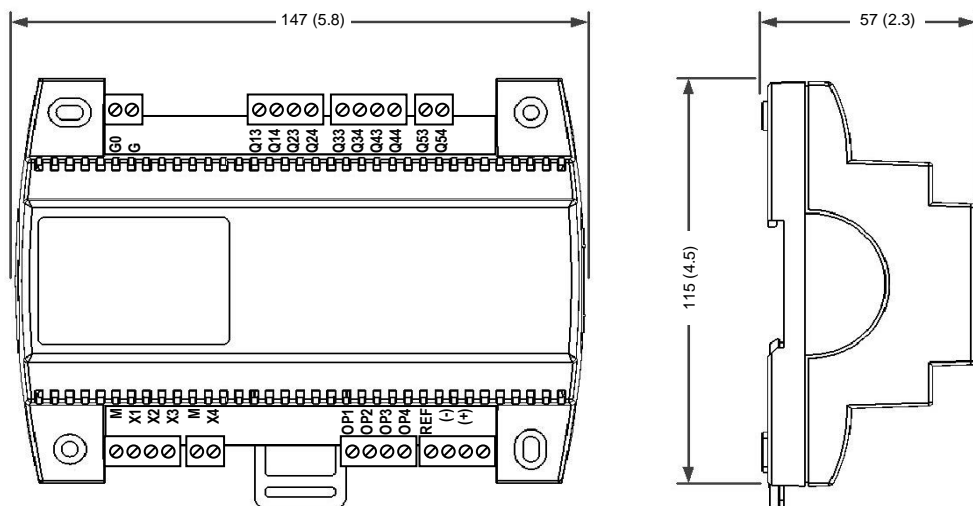
Technical specifications

Important notice and safety advice

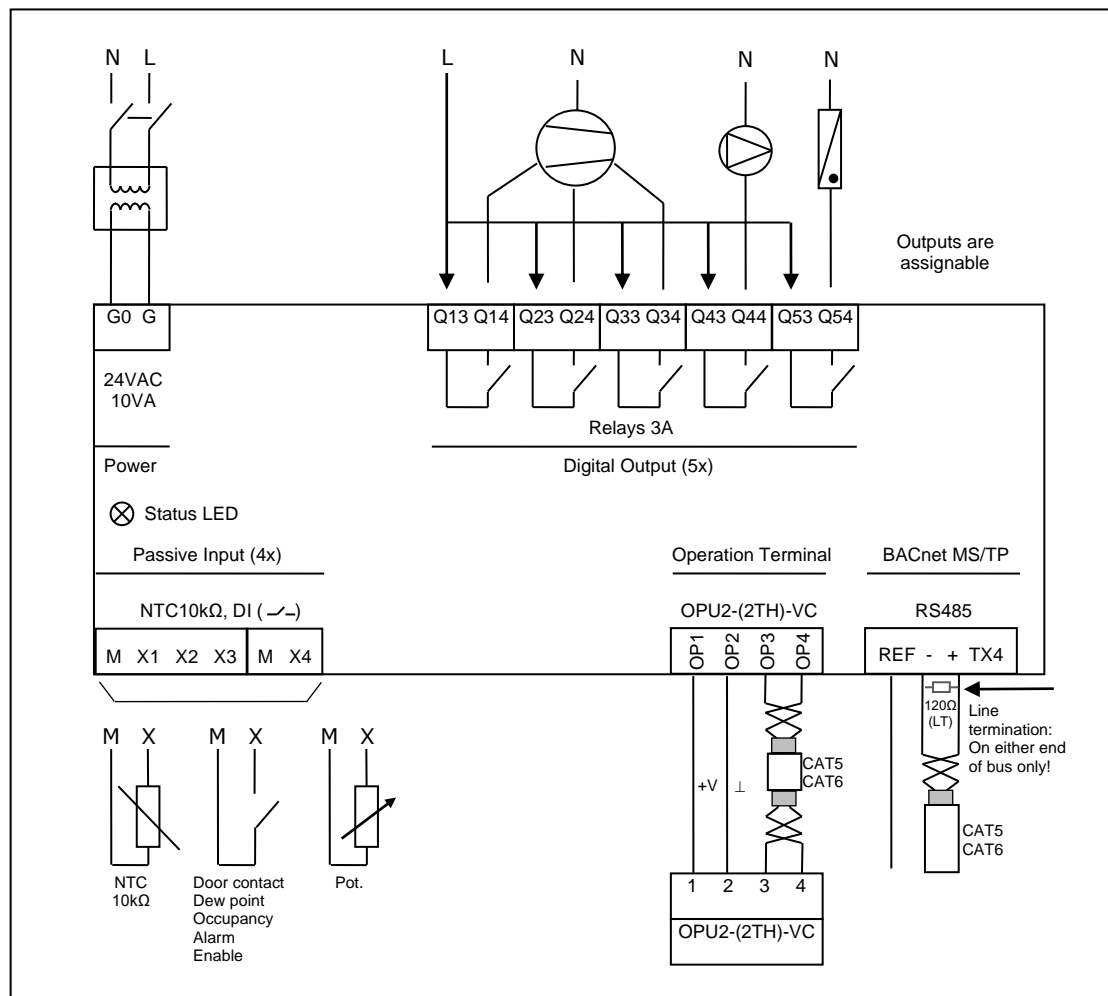
This device is for use as operating controls. It is not a safety device! Where a device failure endangers human life and/or property, it is the responsibility of the client, installer and system designer to add additional safety devices to prevent a system failure caused by such a device failure. Ignoring specifications and local regulations may cause equipment damage and endangers life and property. Tampering with the device and misapplication will void warranty.

Power supply	Power requirements	TCX2-14050-BAC TCX2-14050-120-BAC	24 VAC $\pm 10\%$, 50/60 Hz, SELV to HD 384, Class II, 48VA max 100...125 VAC
	Power consumption		Max. 10 VA
	Electrical connection		Screw terminal connectors for wire 0.34...2.5 mm ² (AWG 24...12)
Signal inputs	Passive input Type & range:		X1 to X4, Passive Temperature NTC or open contact NTC (Sxx-Tn10, 10k Ω @20°C): -40...140 °C (-40...284 °F)
Signal outputs	Relays outputs:		0...250 VAC, 0...30 VDC full-load current 3A (1.5)
	Insulation strength between relays contacts and system electronics:		4000V AC to EN 60 730-1
	between neighboring contacts:		1250V AC to EN 60 730-1
Connection to remote terminal	Hardware interface		RS485 in accordance with EIA/TIA 485
	Cabling		Twisted pair cable category 5 or 6
Network	Hardware interface		RS485 in accordance with EIA/TIA 485
	Max nodes per network		128
	Max nodes per segment		64 (Vector devices only)
	Conductors		Shielded Twisted Pair (STP) cable
	Impedance		100 - 130 ohm
	Nominal capacitance		100 pF/m 16pF/ft. or lower
	Galvanic isolation		The communication circuitry is isolated
	Line termination		A line termination resistance (120 ohm) shall be connected between the terminals (+) and (-) of the furthestmost node of the network
	Network topology		Daisy chain according EIA/TIA 485 specifications
	Recommended maximum length per chain		1200 m (4000 ft.)
BACnet™	Communication standard		BACnet™ MS/TP Master on RS485
	Communication speed		9600, 19200, 38400, 57600, 76800, 115200
			BTL listed May 2014
Environment	Operation		To IEC 721-3-3
	Climatic conditions		class 3K5
	Temperature		0...50 °C (32...122 °F)
	Humidity		<95 % RH non-condensing
	Transport & storage		To IEC 721-3-2 and IEC 721-3-1
	Climatic conditions		class 3K3 and class 1K3
	Temperature		-25...70 °C (-13...158 °F)
	Humidity		<85 % RH non-condensing
	Mechanical conditions		class 2M2
Standards	 conformity		
	EMC directive		2004/108/EC
	Low voltage directive		2006/95/EC
	Product standards		
	Automatic electrical controls for household and similar use		EN 60 730 -1
	Electromagnetic compatibility for industrial and domestic sector		Emissions: EN 60 730-1 Immunity: EN 60 730-1
	Degree of protection		IP30 to EN 60 529
	Pollution class		II (EN 60 730-1)
	Safety class:	TCX2-14050-BAC TCX2-14050-120-BAC	III (IEC 60536) only if SELV is connected to DO, else II II (IEC 60536)
	Overvoltage category		III (EN 60 730-1)
General	Material		Fire proof ABS plastic (UL94 class V-0)
	Dimensions (H x W x D)		57 x 147 x 115 mm (2.3 x 5.8 x 4.5 in)
	Weight (inc. package):		380g (13.4 oz)

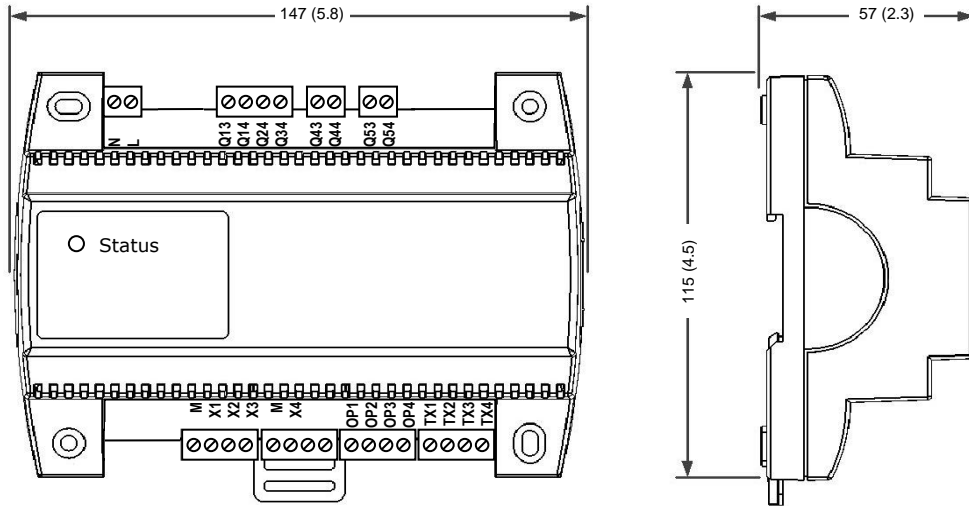
Dimensions, mm (inch) TCX2-14050-BAC



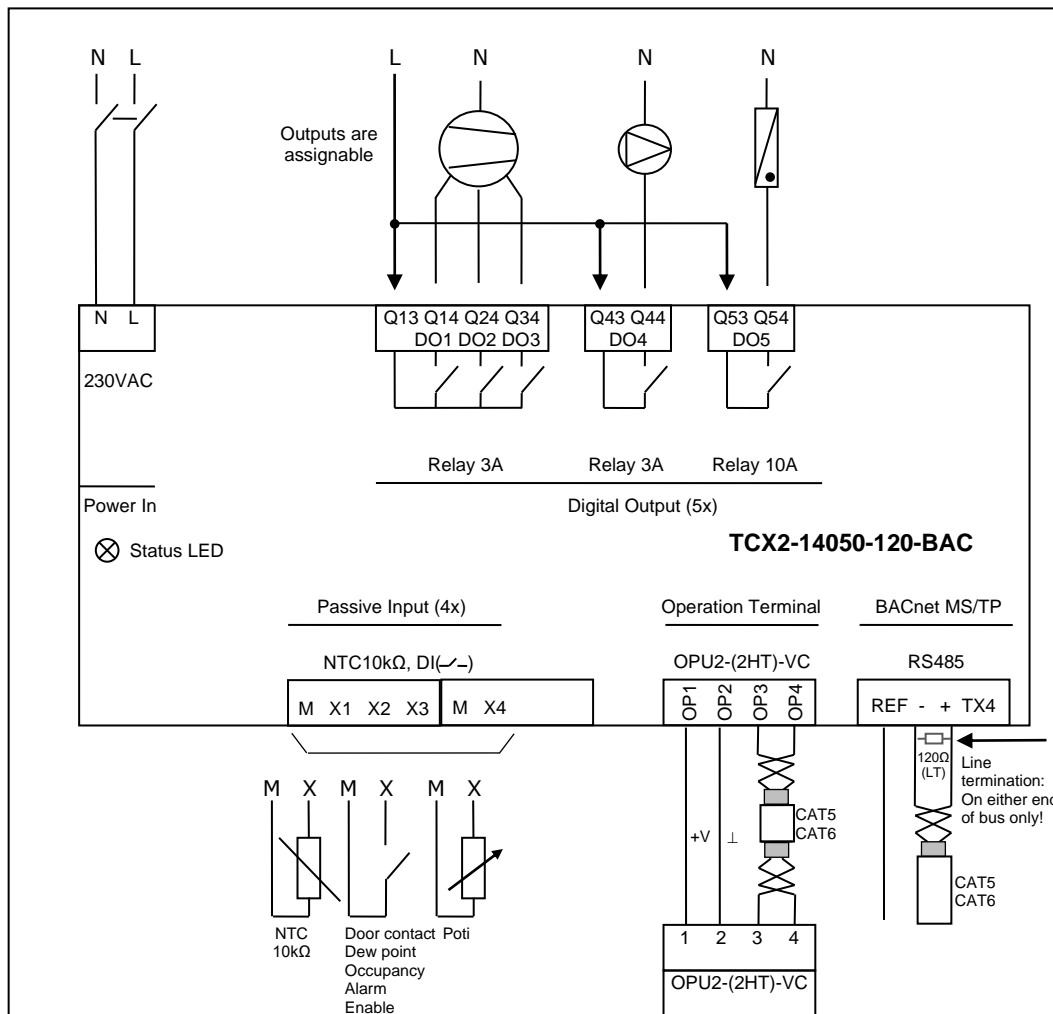
Connection diagram TCX2-14050-BAC



Dimensions, mm (inch), TCX2-14050-120-BAC



Connection diagram TCX2-14050-120-BAC



Installation

- Mount in standard cabinet to DIN 43880
- Surface mounted to top-hat rail to EN 60715 or with 2 #4 screws.
- A protective housing must be used if mounted outside an electrical cabinet.
- Ensure adequate air circulation to dissipate heat generated during operation.
- Observe local regulations.
- Do not mount in a wet or condensation prone environment.

See installation sheet no. 70-000593 (www.vectorcontrols.com).

Selection of actuators and sensors

Temperature sensors: For connections on X1 to X3 use Vector Controls NTC sensors to achieve maximum accuracy: SDB-Tn10-20 (duct), SRA-Tn10 (room), SDB-Tn10-20 + AMI-S10 as immersion sensor.

Actuators: Choose modulating actuators with an input signal type of 0/2-10 VDC. 3-point actuators with constant running time are recommended.

Binary auxiliary devices (e.g. pumps, fans, on/off valves, humidifiers, etc.): Do not directly connect devices that exceed specified limits in technical specifications – observe startup current on inductive loads.

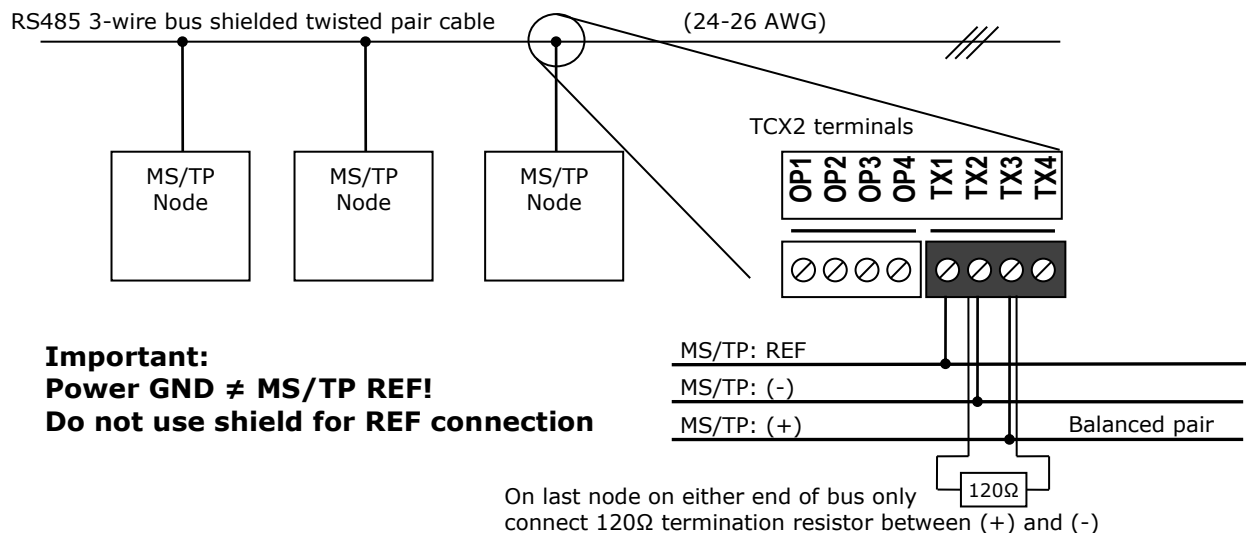
Electrical connections

Use only twisted pair copper conductors for input connections. The operating voltage must comply with the requirements for safety extra-low voltage (SELV) as per EN 60 730.

For devices with 24VAC power supply: Use safety insulating transformers with double insulation. They must be designed for 100% ON-time. When using several transformers in one system the connection terminal 1 must be galvanically connected. The TCX2 is designed for operation by AC 24 V, max. 10 Amp, safety extra-low voltage that is short-circuit-proof. Supplying voltages above AC 24 V may damage or destroy the controller or any other connected devices.

Additionally, connections to voltages exceeding 42 V endanger personnel safety. Observe limits mentioned in the technical specifications. Local regulations must be observed at all times.

Bus connection



Fail safe biasing:

The device supports fail-safe biasing (line polarization). 680Ω per wire, maximum 1 set per RS485 segment

Shield connection:

See Ashrae standard 135 for detailed recommendation regarding how to connect the shield depending on type of nodes present in network. Vector Controls bus modules are isolated devices.

Wire type

An EIA-485 network shall use shielded, twisted-pair cable for data signaling with characteristic impedance between 100 and 130 ohms. Distributed capacitance between conductors shall be less than 100 pF per meter (30 pF per foot). Distributed capacitance between conductors and shield shall be less than 200 pF per meter (60 pF per foot). Foil or braided shields are acceptable.

Line termination

On last node on either end of bus only connect 120Ω termination resistor between (+) and (-).

Maximum length

The maximum recommended length per segment is 1200 meters (4000 feet) with AWG 18 (0.82 mm² conductor area) cable.

Shield connection

See Ashrae Standard 135 for detailed recommendation regarding how to connect the shield depending on type of nodes present in network.

Vector Controls bus modules are isolated devices.

LED indicators

A status LED is located on the upper left side of the controller housing. During normal operation the LED blinks briefly once every 5 seconds. If there is an alarm or fault condition it will blink every second.

The BACnet interface features a green LED and a red LED for indication of traffic on the RS-485 bus. The green LED is lit when an incoming packet is received, and the red LED is lit when an outgoing packet is transmitted to the bus. At power-up, both LED blink twice simultaneously as a sign of the boot process being completed. A constantly lit LED serves as an indication of a fault condition in the reception or sending process.

BACnet® specifications

TCX2-BAC Protocol Implementation Conformance Statement (PICS)

Vendor Name: Vector Controls

Product Name: TCX2 Controls series

TCX2 product description:

The TCX2 communicating BACnet® controllers are designed as universal controls equipment suitable for a large number of applications. They may be used in zoning and other applications which are monitored by a BACnet® MS/TP network.

Supported BACnet® Interoperability Blocks (BIBB)

The BACnet® interface conforms to the B-ASC device profile (BACnet® Application Specific Controller).

The following BACnet® Interoperability Building Blocks (BIBB) are supported.

BIBB	Type	Name
DS-RP-B	Data sharing	Read property - B
DS-RPM-B	Data sharing	Read property multiple - B
DS-WP-B	Data sharing	Write property - B
DM-DCC-B	Device management	Device communication Control - B
DM-DDB-B	Device management	Dynamic device binding - B
DM-DOB-B	Device management	Dynamic object binding - B
DM-TS-B	Device management	Time synchronisation - B
DM-UTC-B	Device management	UTC Time synchronisation - B
DM-RD-B	Device management	Reinitialize device - B

Supported standard BACnet® application services

- ReadProperty
- ReadPropertyMultiple
- WriteProperty
- DeviceCommunication. Needs a password which is "Vector" (case sensitive and without the quotes).
- I-Am
- I-Have
- TimeSynchronisation
- UTCTimeSynchronisation
- ReinitializeDevice ("cold" or "warm"). Needs a password which is "Vector" (case sensitive and without the quotes).

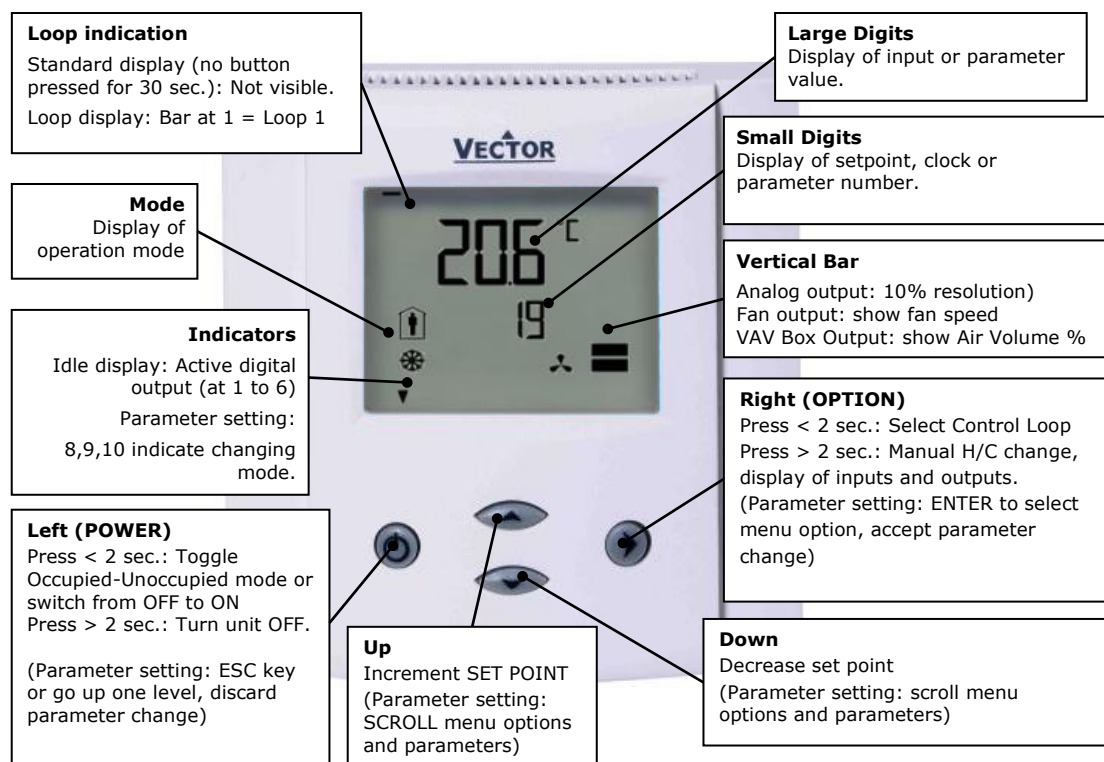
Supported standard Object types

- Device
- Analog input
- Analog value
- Binary value
- Multi-state Value

LED indicators

The BACnet® interface features a green LED and a red LED for indication of traffic on the RS-485 bus. The green LED is lit when an incoming packet is received, and the red LED is lit when an outgoing packet is transmitted to the bus. At power-up, both LED blink twice simultaneously as a sign of the boot process being completed. A constantly lit LED serves as an indication of a fault condition in the reception or sending process.

Display and Operation with OPU2-VC



Operation mode symbols		Control symbols	
	Occupied: (Comfort) All control functions operating per set points.		Heating (reverse) active
	Unoccupied: (Standby, Economy) If enabled, alternative setpoints are used with the intention to reduce energy consumption.		Cooling (direct) active
OFF	OFF: (Energy Hold Off, EHO) Normal control functions are inactive, inputs are monitored for alarms.		Schedule set
			Manual override, delay on enable function
			Fan active

Idle display

The idle display is activated when no key has been pressed for 30 seconds.
The contents of the idle display are selectable through parameters UP08 to UP14.
Setting UP08 to OFF will disable idle display. Last active control loop or manual output will remain displayed

Loop display

Active when changing set points. Large digits show input value. Small digits show set point. Vertical bar show PI output or fan speed. Horizontal bars top left show which loop is being displayed.

Override of secondary set point in cascade control

If cascade control is active (with VAV for example) the user can override the primary loop and manually select the set point of the secondary loop (the loop is then changed to constant air volume mode). This function is helpful for tuning the VAV system. This feature may be disabled by setting UP02 to OFF.

While the secondary loop is displayed change the set point with UP/DOWN. The hand symbol appears.
Change setpoint again to cancel cascade override. The hand symbol disappears.

Delay on enable function

During a pending delay the hand symbol will be shown. For example the condition to activate the controller is met, but a startup delay is specified. The controller will remain switched off and show the hand symbol until the delay expired.

Status LED

A status LED is located on the upper left side of the controller housing. During normal operation the LED blinks briefly once every 5 seconds. It will blink every second in case there is an alarm or fault condition.

Power Failure

- All parameters and set points are memorized and do not need to be re-entered.
- Upon return of power: Set *Parameter UP05* to keep the unit off, switch on, or operation mode before power failure.

Step 5: Complete switching event

Choose operation mode, setpoint or position of output
Characteristics of action (e.g. 0–100% for A1) appear (5th bar indicates step 5 complete)
Press UP/DOWN to select, OPTION to complete

25%
Pr01



Creating annual time schedules (only for V1.3 and later)

Holiday schedules have priority over operation mode schedules. While a holiday schedule is active, the controller will be in the OFF-mode. Other weekly schedules will still be active. It will still be possible to manually override the controller while in holiday mode.

Step 1: For annual schedules: Select holiday (Pr01 – Pr12)

Press UP while PRO-ON displayed:
Press UP or DOWN to SCROLL Pr01 through Pr12,
Press OPTION to select desired schedule (e.g. Pr01),
The following options appear in this order when pressing UP:
no = switching time not active
OP = operation mode (ON, OFF, OCCUPIED, UNOCCUPIED)
LP = set point
AO = Not available
FAN = Fan state (output must be in manual mode by parameter setting)
do = Position binary output – digital, 3-point or PWM (output must be in manual mode by parameter setting).
Hday = Annual time schedule: Holiday
Press UP/DOWN to scroll through the possible events (1st bar indicates step 1 complete)
Press Option to complete selection of event

Hday
Pr01



Step 1: Select start month of holiday (For example: 1-12)

Select month 1 for January and 12 for December. Month is blinking.
Press UP/DOWN to select, OPTION to complete

14.07
Pr01



Step 2: Select start day of holiday (1-31)

Select the day of month (1 – 31). Day is blinking.
This is the first day of the holiday. Controller enters off mode at 00:00.
Press UP/DOWN to select, OPTION to complete

14.07
Pr01



Step 4: Select last month of holiday (For example: 1-12)

Select month 1 for January and 12 for December. Month is blinking.
Press UP/DOWN to select, OPTION to complete

28.07
Pr01




Step 5: Select last day of holiday and complete switching event

Select day of month (1-31). Day is blinking.
This is the last day of the holiday. Controller enters weekly scheduled mode after 23:59.
Press UP/DOWN to select, OPTION to complete

28.07
Pr01



New Feature with V1.3: Heat – Cool - Fan only – Auto selection

<p>Press OPTION > 2 sec. SEL and current time displayed</p> <p>Press UP/DOWN</p> <p>Until small digits display H-C:</p> <p>Press OPTION</p> <p>Currently active Heat or Cool optional with fan symbol or Auto are displayed:</p> <p>Press OPTION again to toggle Heating only, cooling only, fan only in heating mode or cooling mode or auto in the following order:</p> <p>Auto: heating and cooling change automatically based on demand. This must be setup with FU3.</p> <p>Heat: Heating only. The controller stays in heating mode and will not switch to cooling.</p> <p>Heat & Fan: The controller is in fan only mode. The fan will activate based on heating sequence. Mechanical heating is disabled.</p> <p>Cool: Cooling only. The controller stays in cooling mode and will not switch to heating.</p> <p>Cool & Fan: The controller is in fan only mode. The fan will activate based on cooling sequence. Mechanical cooling is disabled.</p>	<p>H-C</p> <p>SEL</p> 
--	--

Display of in- and output values


Step 1: Select in- or output type

<p>Press OPTION > 2 sec. SEL and current time displayed</p> <p>Press UP/DOWN</p> <p>Until SEL is shown on small digits, Large digits show:</p> <p>UI = universal inputs</p> <p>AO = Analog outputs</p> <p>FAN = Fan outputs</p> <p>do = Binary, 3-point or PWM outputs</p> <p>Press OPTION to select in or output type</p>	<p>UI</p> <p>SEL</p>
---	-----------------------------

Step 2: Select ID of in- or output and display value

<p>Press UP/DOWN to step through the number of available in- or outputs</p> <p>Large digits show in-output type & number, Small digits show value</p>	<p>UI 01</p> <p>25%</p>
---	--------------------------------

Step 3: Display total run time for binary outputs

<p>While in binary output mode,</p> <p>Press OPTION key to display the total number of hours the binary output has been ON.</p> <p>Large digits show in-output type & number, Small digits show running time in hours.</p> <p>If the running time is larger than 9999 hours, 10000 hours are shown as level on the vertical bar.</p> <p>The example on the right equals 50345h running time.</p> <p>(Maximum runtime is 65535h = 7.5 years)</p>	<p>do 01</p> <p>345h</p> 
---	---

Display of pulse counting inputs:

Pulse counting inputs may involve large numbers. If the number is larger than 4 digits, 8 digits will be shown. This is done by blinking the larger 4 digits short and the lesser 4 digits long. On the upper right corner the further most right bar will illuminate together with the lesser 4 digits, the one on its left side will illuminate together with the larger 4 digits.

Setting of user parameters

1. Press UP/DOWN buttons simultaneously for three seconds. The display will show firmware version and revision number. Press the OPTION button to start login.
2. CODE is shown in small display. Select 009 using UP/DOWN buttons. The access numbers are fixed and cannot be changed.
3. Press OPTION after selecting the correct code. The user/display parameters are displayed immediately.
4. Select the parameters with the UP/DOWN buttons. Change a parameter by pressing the OPTION button. Three arrows are displayed to indicate that the parameter may be modified. Use UP/DOWN buttons to adjust the value.
5. After you are done, press OPTION to save the new value and return to the selection level (arrows disappear when selection is saved). Pressing left hand POWER button without pressing OPTION will discard the value and return without saving.
6. Press the POWER key to leave the menu. The unit will return to normal operation if no button is pressed for more than 5 minutes.

User and display parameters (Password 009)

Parameter	Description	Range	Default
UP 00	Enable access to operation modes. This setting controls the power button	ON/OFF	ON
UP 01	Enable access to set points. This setting controls the UP / DOWN buttons	ON/OFF	ON
UP 02	Enable manual control in cascade and for fan speeds	ON/OFF	ON
UP 03	Enable change of heating/cooling mode. Controls if user is allowed to manually activate heating, cooling or fan only modes.	ON/OFF	ON
UP 04	Enable access to set clock or change time schedules:	ON/OFF	ON
UP 05	State after power failure: 0= off; 1= on; 2= state before power failure	0, 1, 2	2
UP 06	Enable unoccupied Mode: Shift the setpoint to a lower temperature in winter or higher temperature in summer in order to save energy. Unoccupied mode may be activated through the POWER button, or with the external input (typically for key card switches, occupancy sensors in combination with door contacts for hotels or meeting rooms.)	ON/OFF	OFF
UP 07	Celsius or Fahrenheit: ON= Fahrenheit, OFF= Celsius	ON/OFF	OFF (Celsius)
UP 08	Show idle display while no key is pressed for 30 seconds.	ON/OFF	ON
UP 09	Definition of idle display large digit: Select type of content (00= OFF): 01 = Input 02 = Control loop setpoint	0-6	1
	03 = Analog output 04 = Fan 05 = Binary output 06 = Clock		
UP 10	Definition of idle display large digit: Select content for large digits (0= OFF): This setting depends on UP09.	0-8	1
	Input: 1 = UI1 2 = UI2 3 = UI3 4 = UI4 5 = VI1 6 = VI2 7 = VI3 8 = VI4 Set point: 1 = LP1 Analog output: Fan 1 = Fan 1 Binary output: 1 = DO1 2 = DO2 3 = DO3 4 = DO4 5 = DO5		
UP 11	Definition of idle display small digits: Select type of content (same options as UP09)	0-6	2
UP 12	Definition of idle display small digits: Select content (same options as UP10)	0-10	1
UP 13	Definition of idle display vertical bar: Select type of content (same options as UP09)	0-6	3
UP 14	Definition of idle display vertical bar: Select content (same options as UP10)	0-10	1
UP 15	Show heating or cooling state while in idle display. OFF = Do not show, ON = Show	ON/OFF	ON
UP 16	OFF = Alarms display only while active, ON = Alarms display until confirmed,	ON/OFF	ON
UP 17	Clock display type (12/24): OFF= 24-hr ON= 12-hr (AM/PM)	ON/OFF	OFF(24hr)
UP 18	Reset timer for manual override in time schedule mode. 0 = Reset of override mode is not active. Time schedules overridden manually will be switched back to scheduled mode at next switching event. 1...255 = Delay for the controller to go back to the scheduled OFF or unoccupied operation mode if the operation mode is changed manually to occupied.	0-255 Min	60(Min)
UP 19	Constantly lit backlight for display: OFF = The backlight is only on when a key has been pressed ON = The backlight is constantly on	ON/OFF	OFF
UP 20	New Feature: Do not show input value in loop display OFF = Input value is shown. Setpoint value is shown in the small digits. ON = Only setpoint is shown. Input value is not visible in loop display. The setpoint is shown in the large digits. In single loop fan coil mode, fan speed setting is shown in small digits.	ON/OFF	OFF
UP 21	New Feature: Enable daylight savings mode. If enabled, internal real time clock will be advanced by one hour in summer and delayed one hour in winter. Daylight savings scheme is based on last Sunday of March for summertime and last Sunday of October for Winter time.	ON/OFF	OFF
UP 22	New Feature: TCX2 is in no-reply-mode for OPU2-VC communication OFF = TCX2 is in normal mode for communication with OPU2-VC ON = TCX2 is in no-reply-mode for communication with OPU2-VC No-reply-mode: This mode allows connecting one operation terminal to multiple controllers. One controller must be in normal operation mode and all the others must be set to no-reply-mode. The controllers set to no-reply-mode will follow each command issued by the operation terminal. They will not send responses and their input, output or alarm conditions are not monitored by the operation terminal. Setting a controller with only one operation terminal to no-reply-mode will result in communication error on the operation terminal. In this case parameter UP22 can still be changed to 0 through the operation terminal. To override no-reply mode in case only one controller in no reply mode is connected, press UP&DOWN key together while logged into parameter changing mode.	ON/OFF	OFF
UP 23	New Feature: Wink function: the LED on top lights up constantly if ON OFF = LED has normal function ON = LED is constantly active	ON/OFF	OFF
UP 24	New Feature: Summer / winter mode. Used for control loops, to select the corresponding setpoint limits. Set in xL28	ON/OFF	OFF

	OFF = Summer mode (cooling),	ON = Winter mode (heating)		
--	------------------------------	----------------------------	--	--

Setting parameters to configure the controller

TCX2 is a programmable controller with the flexibility to fit a wide range of applications. The control operation is defined by parameters. They can be set using the standard operation terminal. There are two levels:

1. **User/display parameters (default password 0009)**
2. **Control parameters (default password 0241)**

Recommended set-up procedure:

1. **Set jumpers on the back of the controller for inputs and outputs**
2. **Connect power supply and inputs**
3. **Make sure Celsius – Fahrenheit settings are correct (UP07)**
4. **Program input parameters**
5. **Program control parameters**
6. **Program output parameters**
7. **Program auxiliary functions and user settings**
8. **Test function of unit**
9. **Switch off power**
10. **Connect outputs**
11. **Reconnect power**
12. **Test control loop**

Parameters are grouped according to modules:

Module	Description	PW
UP	User and display parameters	009
LP	Control loops Lp1	241
UI	Input configuration: 1U to 8U	
AL	Alarm configuration: 1AL to 8AL	
FU	Special functions Fu1 to Fu5	
FAN	Fan output configuration FAN1	
DO	Binary output configuration, do1 to do5	
Co	Communication setup (refer to separate communication brochure)	
COPY	copy mode to copy full parameter sets between run, default and external memory with up to 4 saving locations (AEC-PM1)	

How to change parameters

Note: Access to parameters may be inhibited by the supplier of the controller. In this case the below mentioned procedure will not work.

1. Press UP/DOWN buttons simultaneously for three seconds. The display will show firmware version and revision number. Press the OPTION button to start login.
2. CODE is shown in small display. Select 241 or the number provided by your supplier using the UP or DOWN button. These are the default access numbers, your supplier may have changed those numbers or blocked access to the parameters completely. Parameters should only be changed by authorized personnel.
3. Press OPTION after selecting the correct code. The user/display parameters are displayed immediately.
4. Once logged in with 241 control modules are displayed (UI, AL, LP, AO, FAN, DO, CO etc.) – select with UP/DOWN and open with OPTION. Then select the ID with UP/DOWN keys: 1U, 2U, 3U etc., open with OPTION. As soon as the module is open its parameters are displayed.
5. Select the parameters with the UP/DOWN buttons. Change a parameter by pressing the OPTION button. Three arrows are displayed to indicate that the parameter may be modified. Use UP/DOWN buttons to adjust the value.
6. After you are done, press OPTION to save the new value and return to the selection level (arrows disappear when selection is saved). Pressing left hand POWER button without pressing OPTION will discard the value and return without saving.
7. Press POWER to leave parameter selection and return to control module selection.
8. Press the POWER to leave the menu. The unit will return to normal operation, if no button is pressed for more than 5 minutes.

How to select active alarms on outputs and special functions or weekdays in time schedules

1. Select the parameter as described above
2. Press OPTION to start selecting alarms. AL 1 is now shown in the large digits.
3. Press UP to select the alarm 1, press DOWN to deselect the alarm 1. A selected alarm is visible by a dark triangle on the bottom line of the LCD. The output or function will activate if the corresponding alarm is triggered.
4. Press OPTION to step to alarm 2. Repeatedly press OPTION key to step through all available alarms and select or deselect them by pressing UP or DOWN.
5. Press POWER to leave the alarm selection routine and return to the parameter selection level.

Copying and restoring the entire parameter set

It is possible to backup and refresh the entire parameter set to a second onboard memory (default memory) or a plug-in memory. This simplifies substantially the programming of multiple controllers with identical parameter sets.

Removable plug-in memory AEC-PM1

The plug-in memory is an accessory that can be plugged in on the right side of the TCX2. Once connected, the power LED on the AEC-PM1 lights up. The memory can hold up to 4 individual parameter sets. It is easy for a site engineer to update a variety of standard installations or for an OEM to program his standard setup based on application.

Auto-load

While copying a parameter set to eeprom, the user may choose the auto-load feature. With this feature set, the parameters load automatically when powering up the controller. It is thus possible for a non-technical person to perform a parameter update by simply powering up the controller with the AEC-PM1 plugged in.

Procedure to copy parameter sets

1. Login to engineering parameters as described above.
2. Press UP or DOWN until COPY is selected
3. Press the OPTION key. Select copy source: These are the options:

0. CLR	⇒	The copy destination will be erased
1. RUN	⇒	Run time memory
2. DFLT	⇒	Default: On board backup memory
3. EEP1	⇒	External memory folder 1 on AEC-PM1
4. EEP2	⇒	External memory folder 2 on AEC-PM1
5. EEP3	⇒	External memory folder 3 on AEC-PM1
6. EEP4	⇒	External memory folder 4 on AEC-PM1
4. Press OPTION key. Now select copy destination: These are the options:

1. RUN	⇒	Run time memory
2. DFLT	⇒	Default: On board backup memory
3. EEP1	⇒	External memory folder 1 on AEC-PM1
4. EEP2	⇒	External memory folder 2 on AEC-PM1
5. EEP3	⇒	External memory folder 3 on AEC-PM1
6. EEP4	⇒	External memory folder 4 on AEC-PM1
5. Press OPTION key. Your selection is shown on the large digits: source ID to target ID. For example run time memory to eep1 is shown as 1to3. After confirming the selection, choose YES or AUTO to start the copy process. Select NO to abort. AUTO is only available if the target is the external plug in. By selecting AUTO: The parameters will load automatically when the controller is powered up while the AEC-PM1 is plugged in. If one plug-in has several parameter folders with the AUTO flag set the one with the smallest index will be loaded.

New Feature for products with a communication plug-in. Selecting CO15 = 01 will write back an increased address to the AEC-PM1 after a successful copy. This way it is easier to configure large projects.

6. Press the OPTION key to conclude the selection. The Data LED on the AEC-PM1 plug-in blinks to indicate data communication in case it is copied to or from. PEND is shown while the copy process takes place. There are several possibilities for the result:
 - Good: The copy process was successful
 - Fail: Err5, Communication problem. The plug in module is either damaged or missing
 - Fail: Err6, Checksum mismatch. The checksum of the source data was incorrect. Data corruption. This may happen if the plug-in has not been written to before or data corruption took place.

Exchanging parameter sets with a computer

Through a USB/RS485 converter it is possible to read and write parameter sets to a computer by the use of a free program called EasySet. The EasySet tool may be downloaded from the vectorcontrols.com website.

To exchange parameter sets, install the EasySet™ configurator program and plug in the USB/RS485 converter to your computer. Connect the RS485 converter to the OP3 (+) and OP4 (-) terminal of the TCX2 using a twisted pair wire. If an OPU2-VC is connected, you must first unplug it. In order to use EasySet, select the port of your USB converter first.

Parameter sets may now be read out from the TCX2 to the PC and written back to the TCX2. This makes it possible to keep a parameter library on computer, exchange parameter sets through emails or keep a log file of all the projects completed.

Input & alarm/interlock configuration

Universal inputs (analog, binary or passive)

01 u0	For universal inputs: 1U to 4U: Signal type (0= not active): 1= 0-10V (not available) 2= 2-10V (not available) 3= NTC 4 = open contact direct (contact open = 100%, closed = 0%) 5 = open contact reversed (contact open = 0%, closed = 100%) 6 = potentiometer input, assign to setpoint selection of control loop 7 = light control mode: toggle and dimmer switch 8 = pulse counting input.	0-8	1
01 u1	Display minimum value. See note below about display resolution. For potentiometer input: lower range limit of potentiometer in 100 Ohm steps New feature: only if xxu0 = 1, 2 or 6: if minimum value is higher than maximum value, the input signal is reversed. 0% input = 100% signal, 100% input = 0% signal	-50-205	0
01 u2	Display maximum value. See note below about display resolution. For potentiometer input: Upper range limit of potentiometer in 100 Ohm steps New feature: only if xxu0 = 1, 2 or 6: if minimum value is higher than maximum value, the input signal is reversed. 0% input = 100% signal, 100% input = 0% signal	-50-205	100
01 u3	Range of universal inputs (For analog inputs only: 1u0 = 1,2) 0 = x1 3 = square root 1 = x10 4 = square root x 10 2 = x100 5 = square root x 100	0 - 5	0
01 u4	Analog input unit: 0= no unit, 1= %, 2= °C /°F, 3= Pa	0-3	1
01 u5	When 01u0 = 1-5: Select number of samples taken for low pass filter: Filtering prevents unwanted fluctuation of sensor signals. The controller measures signal inputs every second and calculates the input signal based on a number of measured values and a digital low pass filter. Take into account that signal reaction delays as the number of samples taken for the filter increases. Note: changing this value will as well change 01u8	0-100	3
01 u6	Sensor calibration	Per input range	0.0
01 u7	Calculate mathematical function over multiple inputs (0=not active): 1= average, 2= minimum, 3= maximum, 4= differential UI(n) - UI(n-1)	0-4	0
01 u8	New Feature: When 01u0 = 7 (light switch), select auto switch off time. Set to 0, if output should not automatically switch off. Note: Shared value: changing this value will as well change 01u5	00:00s...15:10h MM:SS...HH:MM	00:15 MM:SS

- ➔ Set jumpers on the back of the controller: 0-10VDC (default), 0-20mA, or RT/DI (passive temperature or binary)
- ➔ Match sensor range to input display. With a differential pressure transmitter having 0-200 Pa measuring range set 01U1 display minimum to 0 and 01U2 display maximum to 200. The allowable range value of -50-205 may be adjusted with multipliers in 01U3. The largest displayable values are -990-9999.
- ➔ Passive temperature input is NTC 10k@25°C (77°F). Specified accuracy can only be guaranteed using Vector Controls Sxx-Tn10 sensors. Range values described above also apply to temperature inputs.
- ➔ **Display resolution (01u1 and 01u2)**
Limiting the display range increases set point resolution. A range <25 provides set point steps of 0.1°C (0.2°F). A range <125 provides set point steps of 0.5°C(0.1°F). Larger ranges increase by 1 step. Square root input range (0xu3) has no influence.
Note: Fahrenheit and differential steps are doubled.
- ➔ **New Feature: open contact as input type (01u0 = 4 or 5):** For an open contact input set the jumper to RT/DI and parameter 01u0 to open contact (4 or 5). If set to 4 (open contact direct), an open contact reads as a high value (100%), a closed contact as a low value (0%). If set to 5 (open contact reversed), an open contact reads as low value (0%) and a closed contact as high value (100%). Note: sensor calibration does not work for binary inputs.
- ➔ **New Feature: potentiometer input (01u0 = 6).** A potentiometer may be connected to a passive input to control the setpoint of a control loop. With the input display minimum and maximum values the range of the potentiometer can be defined in 100 ohms steps. For example setting the 1u01 to 50 and 1u02 to 120 represents a potentiometer from 5k to 12k Ohm. The resistance is measured and calculated into a 0-100% value. Based on the potentiometer input, the setpoint will now be moved between the upper and lower setpoint limits of the control loop. There are other uses for the potentiometer input. For example, the controller can be enabled and disabled remotely with a potentiometer using an input in potentiometer mode assigned to the Auxiliary Function Enable/Disable (1FU). Or use Alarm/Interlocks assigned to the potentiometer input to activate or deactivate outputs. With the potentiometer fully on, for example, another interlock could activate a boost mode. The potentiometer could then read OFF (65°F) to Full (85°). Add one more wire connected to a 10k-2 resistor and measure the room temperature as well. Thus with 3 wires in total (potentiometer, common, room temperature) a well-functioning low cost operation terminal may be realized.

- ➔ **New Feature: light control mode: toggle and dimmer switch (01u0 = 7):** Manage lighting with TCX2 and special functions such as alarms, time schedules and automatic occupied/unoccupied mode switch can be used for occupant convenience and to reduce lighting costs. With this feature building light is controlled by using push-button switches in the room connected to passive inputs on TCX2. A passive inputs is assigned directly to an output connected to a relay for the light. This is achieved by setting xd01 to 9. An analog output is assigned directly to an input by assigning xA00 to 7. Use binary outputs for on/off lights or add an analog output for dimming. Pressing the push-button switch for less than 2 seconds will toggle the binary output. For dimming, pressing the push-button switch for longer than 2 seconds will change the input value by 10% per second from 0% to 100% and again back to 0%.

Pulse counting mode

01 u0	For universal inputs: 1U to 4U: Signal type (0= not active): 1= 0-10V (not available) 2= 2-10V (not available) 3= NTC 4 = open contact direct (contact open = 100%, closed = 0%) 5 = open contact reversed (contact open = 0%, closed = 100%) 6 = potentiometer input, assign to set point selection of control loop 7 = light control mode: toggle and dimmer switch 8 = pulse counting input.	0-8	8
01 u1	Not used	-50-205	0
01 u2	Value to be added with each pulse. For single pulse counting set to 1. This value will only be used if u7 = 0.	-50-205	1
01 u3	Range of universal inputs 0 = x1 1 = x10	0 - 1	0
01 u4	Analog input unit: 0= no unit, 1= %, 2= °C /°F, 3= Pa	0-3	1
01 u5	Save value to eeprom, only after every n sample will the data be saved to eeprom. The eeprom allows for 100'000 guaranteed saves. In order to guarantee reliable operation this multiplier should be set to prevent premature aging of the controller. 0 = 1 every sample is saved. 1 = 10 after 10 samples data is saved to the eeprom 2 = 100 after 100 samples data is saved to eeprom 3 = 1000 after 1000 samples data is saved to eeprom	0..3	0
01 u6	Reset counter: any value other than 0 will reset the counter. Once this value is set to 1 and saved, the counter will be reset to 0 immediately.	0...255	0
01 u7	Select Input whose value is used to be added with each pulse.	0-12	0

- ➔ **New Feature: pulse counting mode: (01u0 = 8):** With this feature it is possible to count pulses from a water or energy meter and summarize a constant value or the result of an input.
- ➔ For frequent pulses the summary option of u5 is recommended. This will save only every 10th 100th or 1000th pulse to the eeprom and keep the values until then in RAM. This bears the risk that those values will not be remembered after a power failure.
- ➔ With u07 the value of two inputs may be used in conjunction with the Pulse Counting Input to calculate energy consumption. For example, apply the Mathematical Function-Differential to supply and return water temperature for a heating system. The calculated value of a series of inputs is shown on the input with the higher number. When UI1 supply water temperature and UI2 return water temperature both have Mathematical Function-Differential parameter selected the difference between supply and return temperature will be shown on UI2. When the Pulse Counting input parameter u07 is set to 2, the difference between supply and return temperature is added to the total at each pulse of the flow meter. This total then represents energy consumption.

Mathematical functions on inputs

- ➔ Square root calculation on input values: The input signal maybe subjected to the square root function prior to calculating the display values. The square root is calculated from the input signal and the result is again conditioned to 10bit resolution. The square root function is useful when airflow needs to be calculated from differential pressure, as in VAV systems for example.
- ➔ Calculate mathematical functions over multiple inputs for loop control or display with xxU7. In order to calculate average, minimum or maximum between several inputs, make sure all the inputs are of identical type and range and then activate the same function on xxU7 on all the selected inputs. The largest input of the group selected will carry the calculated value. For example: When average is activated on 02U7 and 01U7 = 1, the average is carried on universal input 2.
- UI2 may now be used as input for control loops and it will show the average value of UI1 and UI2 combined.
It is possible to use different functions on different inputs. For example: minimum of UI1 and UI3 and maximum of UI2 and UI4.
- ➔ The differential function may only be calculated on subsequent inputs. Such as UI2-UI1. The function must only be activated on the minuend (a number from which another number is subtracted) – UI2 in this example. The displayed value of the minuend will change into the difference: UI2 in – UI1 = UI2 out. It is possible to have multiple differentials on one controller. It is not possible to reverse the subtraction: UI1-UI2.

Virtual input configuration

01 u0	For virtual inputs: 5U to 8U: Select signal source 1 = Operation terminal OPU2-VC, OPU2-2TH-VC, etc. 2 = Bus module: AEX-MOD (Modbus), AEX-BAC (BACnet)	0-2	0
01 u1	Display minimum value	-50-205	0
01 u2	Display maximum value	-50-205	100
01 u3	Range of universal inputs (For analog inputs only) 0 = x1 1 = x10 2 = x100	0 - 2	0
01 u4	Analog input unit of measure: 0= no unit, 1= %, 2= °C /°F, 3 = Pa	0-3	2
01 u5	Not used for virtual inputs. Do not change	0-100	12
01 u6	Sensor calibration	Per input range	0.0
01 u7	Calculate mathematical function over multiple inputs (0=not active): 1= average, 2= minimum, 3= maximum, 4= differential UI(n) – UI(n-1)	0-4	0
01 u8	New Feature: Select timeout: If the value is not updated within the specified time period, the input will be disabled. If the input is assigned to an active control loop or a function configuration error Err4 is shown.	00:00s...15:10h MM:SS...HH:MM	01:00 MM:SS

- ➔ Virtual inputs may originate from a remote operation terminal such as the OPU2-VC or from a bus master if a communication module such as the AEX-MOD for MODBUS or AEX-BAC for BACnet is present.
- ➔ The remote input has a selectable timeout. If the value is not updated within this timeout, the input will be disabled and the configuration error Err4 is shown. Rewriting the input value will re-enable the input but will not clear Err4. Err4 can only be cleared by acknowledgement through the right key. Setting the timeout to 0 disables its function. For control functions, the timeout should not be disabled.
While no additional setup is required on the OPU2, the bus master needs to write its value to the correct address for the input within the timeout period. Details are described in the documentation of the communication module.
- ➔ Inputs of OPU2-VC:
The OPU2-VC has one temperature input. This input is assigned to the first virtual input. For the TCX2-14050 this would be input 5. To use the temperature input of OPU2-VC, set 05u0 = 1.
- ➔ Inputs of OPU2-2TH-VC:
The OPU2-2TH-VC has a temperature input, a humidity input and 2 binary inputs. These inputs are assigned to following virtual inputs:
 1. VI1 = UI5 = temperature input
 2. VI2 = UI6 = humidity input
 3. VI3 = UI7 = input 1
 4. VI4 = UI8 = input 2

Alarm function

→ Number of available alarms.

8 alarms are available. The highest priority alarm is alarm 1, the lowest one is alarm 8.

→ The following alarm functions are available.

They are described in greater detail in the following pages:

- High or low limit alarm configuration
- Alarm based on maximum set point deviation of control loop
- Maintenance alarm based on run time counters
- Feedback or output alarms
- Alarms based on control loop sequence
- New Feature: Timeout or cycle mode for outputs

→ Operating the interlock in off mode:

To activate an interlock in OFF mode, set its AL4 value to ON. Make sure AL4 is set to OFF if the interlock should not activate an output while the controller is in OFF mode.

→ Alarm automatic reset or acknowledge only (AL4).

Certain alarms should automatically reset once the condition is removed, but still keep the end user informed that the alarm condition occurred: A typical example is a frost alarm. If the temperature drops too low, the heat should come on and it should stop again once the frost protection reset temperature is reached.

If an alarm indicates a failure of system equipment that would endanger the operation of a device, the alarm should not automatically reset. For example, when a fan fails to come on or a pump does not operate. In this case the alarm situation needs to be resolved before restarting the outputs.

By setting AL3 to ON the engineer determines that the alarm must be reset manually before normal operation can continue.

→ Alarm delay, alarm limit and alarm reset:

For the above alarms, an activation delay, a limit and a reset (where applicable) may be defined. The reset determines when the alarm condition will return to normal. It is used with input limit alarms, in frost protection for example. The frost protection alarm is activated once the temperature drops below 5°C (41°F), the alarm reset is set to 5K. The room is now heated until the temperature reaches 5°C (41°F) + 5K = 10°C (50°F). Once this temperature is reached the alarm will switch off, it will remain blinking until acknowledged.

→ Alarm Settings on Outputs

The position of an output in the event of an alarm may be defined for each output and each alarm individually. The output can be switched on (100%) or (0%).

Additionally, analog outputs may now as well be set to a predefined value. To achieve this, the same alarm needs to be selected in the ON and OFF register. additional parameter is provided to choose the desired alarm level.

Priority for output control

1. Alarm level low
2. Alarm level high
3. Operation mode OFF
4. Control function

off

An

→ The alarm takes precedence over operating state and control signal. For interlocks, its operation during OFF mode is defined through parameter AL4.

→ Two parameters define the behavior of the output based on an alarm: One parameter defines which alarm deactivates the output (0%); the other parameter defines which alarm activates the output to 100%. Each alarm can be individually selected. Multiple alarms can be assigned to one output. Should an alarm be active simultaneously in the parameter to activate and another one to deactivate the output, the one to de-activate has precedence.

High or low limit alarm configuration

1AL 0	Select alarm type: 0 = Alarm is not active 1 = Input high or low limit (Select input in AL 2) 2 = Max. set point deviation of control loop (select loop in AL 1) 3 = Maintenance alarm from run time counters (select counter in AL 1) 4 = Feedback or output alarm for fan, supervise fan state (Select fan in AL 1) 5 = Feedback or output alarm for binary output (select output in AL 1) 6 = Feedback or output alarm for analog output (select output in AL 1) 7 = Level alarm or interlock for PI-sequence of control loop (select output in AL 1) 8 = Timeout or cycle mode for outputs. (select type in AL 2 and ID in AL 1)	0...8	0
1AL 1	Not used	0...8	0
1AL 2	Select supervised input if 1AL0 = 1 0 = not active, 1 = UI1 to 8 = VI4	0...8	0
1AL 3	Alarm or interlock mode OFF = Alarm mode active: Icon and the words ALA# on the small digits indicating active alarm will appear on display, reset option in 1AL4 applies. ON = Interlock mode: Outputs revert to normal operation when alarm condition is no longer present, Icon and text indicating active alarm will not appear.	OFF, ON	OFF (Alarm)
1AL 4	Automatic reset or acknowledge to reset (only if AL3 = OFF) OFF = Alarm condition resets automatically. After alarm condition is no longer present, outputs will revert to normal operation, but alarm Icon will continue to blink on display until acknowledged with Option key. ON = Alarm condition must be reset manually. After alarm condition is no longer present, outputs will remain in alarm setting, and Icon will continue to show on display, until acknowledged with Option key. Note: All alarms operate as well if the controller is in OFF mode.	OFF, ON	OFF (Automatic reset)
	Select if interlock is active in OFF mode (only if AL3 = ON) OFF = Interlock is not active while controller is in off mode or disabled ON = Interlock is active independent of controller state		
1AL 5	Delay until alarm is active	00:00s...15:10h MM:SS...HH:MM	00:00 MM:SS
1AL 6	Type of alarm (applies only if AL0 = 1, 7) OFF = Low limit alarm ON = High limit alarm	OFF, ON	OFF
1AL 7	Alarm limit for input based alarms (applies only if AL0 = 1, 4 to 6 in feedback mode) Note: shared value. Changing this input will as well change 1AL9	Per input range	10%
1AL 8	Hysteresis for alarm setback for input based alarms (applies only if AL0 = 1) Note: shared value. Changing this input will as well change 1ALA	Per input range	5%
1AL 9	Not used	0...100%	8%
1AL A	Not used	0...100%	4%

Alarm based on maximum set point deviation of control loop

1AL 0	Select alarm type: 0 = Alarm is not active 1 = Input high or low limit (Select input in AL 2) 2 = Max. set point deviation of control loop (select loop in AL 1) 3 = Maintenance alarm from run time counters (select counter in AL 1) 4 = Feedback or output alarm for fan, supervise fan state (Select fan in AL 1) 5 = Feedback or output alarm for binary output (select output in AL 1) 6 = Feedback or output alarm for analog output (select output in AL 1) 7 = Level alarm or interlock for PI-sequence of control loop (select output in AL 1) 8 = Timeout or cycle mode for outputs. (select type in AL 2 and ID in AL 1)	0...8	2
1AL 1	Select control loop if 1AL 0 = 2,7, Note: max deviation limit is defined in control loop parameters 0 = all active control loops (not valid if 1AL0 = 7) 1 = loop 1	0...8	1
1AL 2	Not used	0...12	0
1AL 3	Alarm or interlock mode OFF = Alarm mode active: Icon and the words ALA# on the small digits indicating active alarm will appear on display, reset option in 1AL4 applies. ON = Interlock mode: Outputs revert to normal operation when alarm condition is no longer present, Icon and text indicating active alarm will not appear.	OFF, ON	OFF (Alarm)
1AL 4	Automatic reset or acknowledge to reset (only if AL3 = OFF) OFF = Alarm condition resets automatically. After alarm condition is no longer present, outputs will revert to normal operation, but alarm Icon will continue to blink on display until acknowledged with Option key. ON = Alarm condition must be reset manually. After alarm condition is no longer present, outputs will remain in alarm setting, and Icon will continue to blink on display, until acknowledged with Option key. Note: All alarms operate as well if the controller is in OFF mode. Select if interlock is active in OFF mode (only if AL3 = ON) OFF = Interlock is not active while controller is in off mode or disabled ON = Interlock is active independent of controller state	OFF, ON	OFF (Automatic reset)
1AL 5	Delay until alarm is active	00:00s...15:10h MM:SS...HH:MM	00:00 MM:SS

*If the input does not reach the setpoint within the set point deviation parameter limit an alarm is generated.
See maximum control loop set point deviation parameter xL26 in the control loop section for further details.

Maintenance alarm based on run time counters*

1AL 0	Select alarm type: 0 = Alarm is not active 1 = Input high or low limit (Select input in AL 2) 2 = Max. set point deviation of control loop (select loop in AL 1) 3 = Maintenance alarm from run time counters (select counter in AL 1) 4 = Feedback or output alarm for fan, supervise fan state (Select fan in AL 1) 5 = Feedback or output alarm for binary output (select output in AL 1) 6 = Feedback or output alarm for analog output (select output in AL 1) 7 = Level alarm or interlock for PI-sequence of control loop (select output in AL 1) 8 = Timeout or cycle mode for outputs. (select type in AL 2 and ID in AL 1)	0...8	3
1AL 1	Select run time counter of which binary output if AL 0 = 3, 0 = all binary outputs 1 = Digital output 1 to 7 = Digital output 7	0...8	0
1AL 2	Not used	0...8	0
1AL 3	Alarm or interlock mode OFF = Alarm mode active: Icon and the words ALA# on the small digits indicating active alarm will appear on display, reset option in 1AL4 applies. ON = Interlock mode: Outputs revert to normal operation when alarm condition is no longer present, Icon and text indicating active alarm will not appear.	OFF, ON	OFF (Alarm)
1AL 4	Automatic reset or acknowledge to reset (only if AL3 = OFF) OFF = Alarm condition resets automatically. After alarm condition is no longer present, outputs will revert to normal operation, but alarm Icon will continue to blink on display until acknowledged with Option key. ON = Alarm condition must be reset manually. After alarm condition is no longer present, outputs will remain in alarm setting, and Icon will continue to blink on display, until acknowledged with Option key. Note: All alarms operate as well if the controller is in OFF mode. Select if interlock is active in OFF mode (only if AL3 = ON) OFF = Interlock is not active while controller is in off mode or disabled ON = Interlock is active independent of controller state	OFF, ON	OFF (Automatic reset)
1AL 5	Delay until alarm is active	00:00s...15:10h MM:SS...HH:MM	00:00 MM:SS

*Maintenance alarms activate once a run time has reached its maintenance level. The run time limit may be set for each binary output. See binary output parameters xd09 and xd10 for details.

Feedback or output alarms

1AL 0	Select alarm type: 0 = Alarm is not active 1 = Input high or low limit (Select input in AL 2) 2 = Max. set point deviation of control loop (select loop in AL 1) 3 = Maintenance alarm from run time counters (select counter in AL 1) 4 = Feedback or output alarm for fan, supervise fan state (Select fan in AL 1) 5 = Feedback or output alarm for binary output (select output in AL 1) 6 = Feedback or output alarm for analog output (select output in AL 1) 7 = Level alarm or interlock for PI-sequence of control loop (select output in AL 1) 8 = Timeout or cycle mode for outputs. (select type in AL 2 and ID in AL 1)	0...8	4 - 6
1AL 1	Select fan, binary or analog output if 1AL 0 = 4, 5, 6, 8 0 = Interlock or alarm not active 1..x = selected output	0...8	1
1AL 2	Select supervised input or activate output alarm if 1AL 0 = 4, 5, 6: 0 = Output alarm, 1 = UI1 to 8 = VI4	0...8	0
1AL 3	Alarm or interlock mode OFF = Alarm mode active: Icon and the words ALA# on the small digits indicating active alarm will appear on display, reset option in 1AL4 applies. ON = Interlock mode: Outputs revert to normal operation when alarm condition is no longer present, Icon and text indicating active alarm will not appear.	OFF, ON	OFF (Alarm)
1AL 4	Automatic reset or acknowledge to reset (only if AL3 = OFF) OFF = Alarm condition resets automatically. After alarm condition is no longer present, outputs will revert to normal operation, but alarm Icon will continue to blink on display until acknowledged with Option key. ON = Alarm condition must be reset manually. After alarm condition is no longer present, outputs will remain in alarm setting, and Icon will continue to blink on display, until acknowledged with Option key. Note: All alarms operate as well if the controller is in OFF mode.	OFF, ON	OFF (Automatic reset)
	Select if interlock is active in OFF mode (only if AL3 = ON) OFF = Interlock is not active while controller is in off mode or disabled ON = Interlock is active independent of controller state		
1AL 5	Delay until alarm is active	00:00s...15:10h MM:SS...HH:MM	00:00 MM:SS
1AL 6	Type of feedback (applies only if AL0 = 4, 5, 6, 8) OFF = Direct: Output on, feedback high ON = Reverse: Output on, feedback low	OFF, ON	OFF
1AL 7	Alarm limit for input based alarms (applies only if AL0 = 1, 4 to 6 in feedback mode) Note: shared value. Changing this input will as well change 1AL9	Per input range	10%
1AL 8	Hysteresis for alarm setback for input based alarms (applies only if AL0 = 1) Note: shared value. Changing this input will as well change 1ALA	Per input range	5%
1AL 9	Alarm limit for sequence based alarms (applies only if AL0 = 4 to 6 in output mode, 7) Note: shared value. Changing this input will as well change 1AL7	0...100%	8%
1AL A	Hysteresis for alarm setback for sequence based alarms (applies only if AL0 = 4 to 6 in output mode or 7) Note: shared value. Changing this input will as well change 1AL8	0...100%	4%

➔ Feedback alarms for fans, binary and analog outputs (AL0 = 4-6):

Feedback alarms are deployed to make sure a device is operating correctly. For example, to supervise a fan, feedback from a pressure switch may be used. While the fan is in operation, the pressure should be high, if the fan is off, the pressure should be low. If any of these conditions is amiss an alarm needs to be generated. Feedback alarms normally should not reset themselves automatically, therefore set AL4 = ON.

➔ New Feature: Output alarms for fans, binary and analog outputs (AL0 = 4-6):

Output alarms or interlocks can be used to activate an interlock based on the activation of, or exceeding the limit of, an output. A feedback alarm with no input assigned (AL2 = 0) will work as an output alarm or interlock.

For fan output alarms, each fan speed has a value of 10%. So speed 1 = 10%, speed 2 = 20% and speed 3 = 30%. To trigger an interlock or alarm based on fan speeds, the appropriate limits will have to be set using AL9 and AL10.

For binary outputs, the level is 100% when on and 0% when the output is off.

Analog outputs are according to their actual output level in % of the full span.

Alarms based on control loop sequence

1AL 0	Select alarm type: 0 = Alarm is not active 1 = Input high or low limit (Select input in AL 2) 2 = Max. set point deviation of control loop (select loop in AL 1) 3 = Maintenance alarm from run time counters (select counter in AL 1) 4 = Feedback or output alarm for fan, supervise fan state (Select fan in AL 1) 5 = Feedback or output alarm for binary output (select output in AL 1) 6 = Feedback or output alarm for analog output (select output in AL 1) 7 = Level alarm or interlock for PI-sequence of control loop 8 = Timeout or cycle mode for outputs. (select type in AL 2 and ID in AL 1)	0...8	0
1AL 1	Select control loop if 1AL 0 = 2,7, Note: max deviation limit is defined in control loop parameters 0 = all active control loops (not valid if 1AL0 = 7) 1 = loop 1	0...8	0
1AL 2	Select sequence if 1AL0 = 7 0 = heating or reverse 1 = cooling or direct 2 = heating and cooling or reverse and direct	0...8	0
1AL 3	Alarm or interlock mode OFF = Alarm mode active: Icon and the words ALA# on the small digits indicating active alarm will appear on display, reset option in 1AL4 applies. ON = Interlock mode: Outputs revert to normal operation when alarm condition is no longer present, Icon and text indicating active alarm will not appear.	OFF, ON	OFF
1AL 4	Automatic reset or acknowledge to reset (only if AL3 = OFF) OFF = Alarm condition resets automatically. After alarm condition is no longer present, outputs will revert to normal operation, but alarm Icon will continue to blink on display until acknowledged with Option key. ON = Alarm condition must be reset manually. After alarm condition is no longer present, outputs will remain in alarm setting, and Icon will continue to blink on display, until acknowledged with Option key. Note: All alarms operate as well if the controller is in OFF mode. Select if interlock is active in OFF mode (only if AL3 = ON) OFF = Interlock is not active while controller is in off mode or disabled ON = Interlock is active independent of controller state	OFF, ON	OFF
1AL 5	Delay until alarm is active	00:00s...15:10h MM:SS...HH:MM	00:00 MM:SS
1AL 6	Type of alarm (applies only if AL0 = 1, 7) OFF = Low limit alarm ON = High limit alarm	OFF, ON	OFF
1AL 7	Not used	Per input range	10%
1AL 8	Not used	Per input range	5%
1AL 9	Alarm limit for sequence based alarms (applies only if AL0 = 4 to 6 in output mode, 7) Note: shared value. Changing this input will as well change 1AL7	0...100%	8%
1AL A	Hysteresis for alarm setback for sequence based alarms (applies only if AL0 = 4 to 6 in output mode or 7) Note: shared value. Changing this input will as well change 1AL8	0...100%	4%

➔ Alarms or interlocks for PI sequences of control loops (AL0 = 7)

Set an alarm or interlock if a sequence of a control loop exceeds a certain level. This may be used to control an output through several control conditions in parallel when applied as interlock, or to indicate a malfunctioning control setup when used as alarm. Use limits AL9 and ALA to define limit and hysteresis for alarms or interlocks for PI sequences.

➔ Alarm notification or interlock (AL3):

Low or high limits of inputs may be used to supervise operating conditions when an output should be switched on or off independent of control situations. In this case an alarm display may be unwanted. The display of an alarm can be suppressed by converting the alarm to an interlock by setting AL3 to ON.

New Feature: Timeout or cycle mode for outputs

1AL 0	Select alarm type: 0 = Alarm is not active 1 = Input high or low limit (Select input in AL 2) 2 = Max. set point deviation of control loop (select loop in AL 1) 3 = Maintenance alarm from run time counters (select counter in AL 1) 4 = Feedback or output alarm for fan, supervise fan state (Select fan in AL 1) 5 = Feedback or output alarm for binary output (select output in AL 1) 6 = Feedback or output alarm for analog output (select output in AL 1) 7 = Level alarm or interlock for PI-sequence of control loop (select output in AL 1) 8 = Timeout or cycle mode for outputs.	0...8	0
1AL 1	Select fan, binary or analog output if 1AL 0 = 4, 5, 6, 8 0 = Interlock or alarm not active 1..x = selected output	0...8	0
1AL 2	Select type of device for timeout detection if 1AL0 = 8 0 = Operation mode, Active if operation mode is OFF. (revert using AL6) 1 = fan, Active if fan is off 2 = binary output 3 = analog output	0...8	0
1AL 3	Alarm or interlock mode OFF = Alarm mode active: Icon and the words ALA# on the small digits indicating active alarm will appear on display, reset option in 1AL4 applies. ON = Interlock mode: Outputs revert to normal operation when alarm condition is no longer present, Icon and text indicating active alarm will not appear.	OFF, ON	OFF
1AL 4	Automatic reset or acknowledge to reset (only if AL3 = OFF) OFF = Alarm condition resets automatically. After alarm condition is no longer present, outputs will revert to normal operation, but alarm Icon will continue to blink on display until acknowledged with Option key. ON = Alarm condition must be reset manually. After alarm condition is no longer present, outputs will remain in alarm setting, and Icon will continue to blink on display, until acknowledged with Option key. Note: All alarms operate as well if the controller is in OFF mode. Select if interlock is active in OFF mode (only if AL3 = ON) OFF = Interlock is not active while controller is in off mode or disabled ON = Interlock is active independent of controller state	OFF, ON	OFF
1AL 5	Timeout period: time while the output is off. This time will be reset if the output activates.	00:00s...15:10h MM:SS...HH:MM	00:00 MM:SS
1AL 6	Direct or reverse reading (applies only if AL0 = 4, 5, 6, 8) OFF = Direct: Cycle function is active, when output is off ON = Reverse: Cycle function is active, when output is on.	OFF, ON	OFF
1AL 7	Run time in cycle mode. (applies only if AL0 = 8) Interlock or alarm will be activated for the run time specified here.	00:00s...15:10h MM:SS...HH:MM	00:00
1AL 8	Activation in cycle mode. (Applies only if AL0 = 8) 0 = function is active independent of operation mode 1 = function is active only in ON mode 2 = function is active only in OFF mode 3 = function is active only in disabled mode 4 = function is active only in OFF and disabled mode.	0...4	0
1AL 9	Not used	0...100%	8%
1AL A	Not used	0...100%	4%

➔ New Feature: Cycle mode for interlocks or alarms (AL0 = 8)

In cycle mode, the output will activate after a defined timeout period (AL5) for a set period of time (run time, AL7). After the run time has expired, the output will stay off for the timeout period and will activate again after it has expired and so forth.

➔ Reverse or direct

The behavior may be reversed using AL6. If set to ON, timeout will start when the output is on and the output will deactivate during the run time defined in AL7.

➔ The timeout period will restart, should the output activate in direct mode or deactivate in reverse mode during the defined the timeout period.

➔ This function can be set with AL8 to be only active during certain operation modes. It can therefore be used either as valve cycle or as humidity or mould control feature. Important is to keep AL4 = ON if the function should be active in OFF or disabled mode.

➔ Truth table for cycle activation in interlock mode (AL3 = ON)

	AL4 = OFF	AL4 = ON
AL8 = 0	Only active in on mode	Always active
AL8 = 1	Only active in on mode	Only active in on mode
AL8 = 2	Not active	Only active in off mode
AL8 = 3	Not active	Only active in disabled mode
AL8 = 4	Not active	Only active in off or disabled mode

Control loop configuration

Manipulation of the setpoint

Parameter	Description	Range	Default
1L 00	Select loop control input (0= loop disabled): 1= UI1 to 8= VI4	0–8	1
1L 01	Minimum set point limit heating or winter mode	per input range	0%
1L 02	Maximum set point limit heating or winter mode	per input range	100%
1L 03	Minimum set point limit cooling or summer mode	per input range	0%
1L 04	Maximum set point limit cooling or summer mode	per input range	100%
1L 05	Enable set point compensation. Setpoint compensation is further described in auxiliary function 4FU. 0= disabled 1= winter compensation 2= summer compensation 3= winter and summer	0–3	0
1L 06	Select loop setpoint (0= normal): 1 = combine setpoint with previous control loop 2 = cascade with reverse sequence of primary loop 3 = cascade with direct sequence primary loop 4 = cascade with both reverse and direct sequence of primary loop New Feature: 5 = UI1 (percentage of input value is spanned between set point limits) 6 = UI2 (percentage of input value is spanned between set point limits) 7 = UI3 (percentage of input value is spanned between set point limits) 8 = UI4 (percentage of input value is spanned between set point limits) Note: for input based setpoints: input must be set to 0-100% or in potentiometer mode.	0–8	0
1L 07	X _{SBV} : Unoccupied mode setpoint shift If 1L27 = OFF, the occupied setpoint is shifted by the value set with this parameter. The heating set point is reduced and the cooling set point is increased.	Per input range	5%
1L 08	X _{DZ} : Dead zone between displayed set point in 4-pipe mode and acting setpoint New Feature: In 4-pipe mode, if both heating and cooling sequences of a loop are enabled, the center setpoint is shown on the display.	Per input range	2%
1L 27	New Feature: Fixed set point in unoccupied mode OFF = In unoccupied mode, set point is shifted according to 1L07 ON = In unoccupied mode use minimum set point limit as set point in heating mode or maximum set point limit in cooling mode	ON/OFF	OFF
1L 28	New Feature: Set point limits selection based on summer winter OFF = Set point limits follow heat – cool setting of control loop ON = Set point limits follow summer – winter flag (UP 24)	ON/OFF	OFF

➔ Unoccupied mode setpoints:

There are two possibilities to change the setpoint in unoccupied mode: Shift it by L07 or switch to the minimum setpoint limit in heating mode and maximum setpoint limit in cooling by setting 1L27 to ON.
Unoccupied mode may be disabled by setting UP06 to OFF.

➔ Setpoint compensation:

The setpoint compensation is typically used to compensate the set point due to a change in outside temperature. Enable summer or winter set point compensation for this control loop with L05. Both setpoint shift or setpoint setback are possible. They are described in more detail under auxiliary function 4FU.

➔ New Feature: Display of setpoint value:

Depending on the configuration of the controller there are various set points that might be active. If the control loop is in heating only or cooling only setup, this means if only one sequence is enabled, the acting setpoint is shown. If both sequences are enabled, the controller is in 4-pipe mode. In this case the set point shown is the setpoint which lies between the acting heating and cooling setpoints. The distance between the displayed setpoint and the acting setpoint is called dead zone (1L08).

In unoccupied mode, the acting setpoint is shown in all cases.

➔ New Feature: Summer / winter mode:

For 4-pipe systems it is useful to control the setpoint limits by a summer – winter flag instead of heating – cooling mode. To have set point limits follow summer winter instead of heating/cooling, enable xL28. Set point limits now follow the setting of UP24 (summer / winter mode).

➔ New Feature: Controlling the setpoint through a potentiometer or input:

To use a potentiometer to control the setpoint, select the input with xL06. The selected input must be set to 0-100% or be in potentiometer mode. The value of the input will then be spanned between the upper and lower setpoint limits of the active mode (heating, cooling or summer, winter). A value of 0% of the input will then result in the set point to match the lower limit and a value of 100% results in the setpoint being identical to the upper limit. The values in between are adjusted proportionally.

Heating / cooling – reverse / direct sequence.

Parameter	Description	Range	Default
1L 24	Activation of reverse/direct (heat/cool) sequence OFF= activates based on demand ON = follows heat/cool state of controller: Set manually or by auxiliary function (3FU)	ON/OFF	OFF
1L 25	Delay for heat/cool changeover in case above parameter is OFF. This delay prevents frequent switching of sequences.	00:00s...15:10h MM:SS...HH:MM	05:00 MM:SS
1L 26	Max allowed set point deviation (will generate an alarm if enabled in alarm parameters), Disabled if set to 0.	per input	0.0

→ Cascade control:

In cascade control (L06) the setpoint of the secondary loop is determined by the demand of the primary loop. The setpoint of the secondary loop is calculated proportionally according to demand of the primary loop between minimum and maximum setpoint limits. Cascade control is activated by setting the parameter XL06 of the secondary control loop.

A typical application is a variable air volume system where the temperature output determines the pressure set point.

Cascade Control Example – VAV Application	
Primary loop = temperature (1L)	Secondary loop = airflow/pressure (2L)
	Settings: 2L01=20%, 2L02=60%, 2L06=2
Depending on temperature set point, the demand is calculated for loop 1. For example 40%.	Based on demand of loop 1, the set point of pressure loop is calculated proportionally between min (20%) and max (60%) pressure set point limits. A demand of 40% will result in a set point of 36% in the above example.

→ Manual override

The set point of cascaded control loops may be manually overridden if not disabled with UP02. Such an override will not reset automatically. To reset back to auto mode, change the set point again while in manual mode and it will return to auto.

→ Activation of reverse / direct sequence

The active sequence for each loop which has both sequences assigned to an output may be determined either by demand or by following the heat / cool mode of the controller. The heat cool mode of the controller can either be set manually or with the auxiliary function FU3.

→ Max set point deviation

This parameter defines the acceptable limit for the deviation alarm. In the alarm setup it is possible to trigger an alarm or an interlock if the set point does not reach the acceptable limit within a certain time. This can be used to indicate a mal function or to trigger additional booster outputs.

PI control sequence

Parameter	Description	Range	Default
1L 09	X _{OH} : Offset for heating PI sequence	per input range	0%
1L 10	X _{OC} : Offset for cooling PI sequence	per input range	0%
1L 11	X _{PH} : P-band heating	per input range	2%
1L 12	X _{PC} : P-band cooling	per input range	2%
1L 13	Integral gain heating (0.1 steps) low= slow reaction, high= fast reaction	0–25.5	0.0
1L 14	Integral gain cooling (0.1 steps)	0–25.5	0.0
1L 15	Measuring interval integral (seconds) low= fast reaction, high value= slow reaction	0–255	1 sec.

→ Activating control loops

Control loops and sequences are activated by assigning outputs to them in the output configuration section.

→ Proportional control (P-band):

The proportional control function calculates the output based on the difference between setpoint and input. The proportional band (P-band) defines the difference between setpoint and input required to produce a 100% output. For example: a heating control sequence and a 2.0°C (4.0°F) P-band value will produce a 10V output (100%) when the input temperature is 2.0°C (4.0°F) below setpoint. This is the working range of the proportional control sequence. With 1°C (2°F) below setpoint, the output will be 5V (50%).

Setting the proportional band to 0 disables proportional control. This is required for very fast control systems such as fan control through air pressure transmitters.

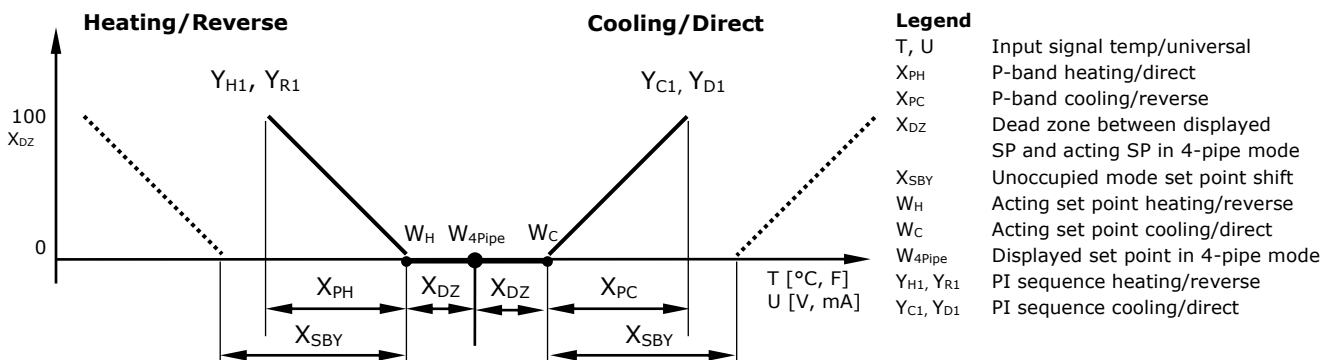
→ Integral control:

Proportional control is in most cases a very stable control mode. The flaw of proportional control alone, however, is that the setpoint is normally not reached. As the measured value gets closer to the setpoint, the output reduces until it reaches a point, a fraction above or below the setpoint, where the output equals the load. To reach the setpoint and achieve a higher level in comfort, the integral function should be activated.

→ Integral Gain (KI) dynamically increases the output by the selected KI value every **Measuring Interval TI** until the setpoint is reached. The challenge is to prevent hunting, where the output increases too fast and the temperature overshoots the setpoint. Hunting may result if the integral gain is too high or measuring interval too short. Each system is different. To prevent instability the P-band should be extended when integral gain is active (L14 or L15 set above 0).

Setting the integral gain to 0 disables integral and differential control.

Recommended Values						
	heating (air)	heating (radiant)	humidifying	cooling	dehumidifying	pressure
P-band	2°C(4°F)	1.5°C(3°F)	10%	1.5°C(3°F)	10%	0
Measuring interval (TI)	2	5	15	1	15	1
Integral gain (KI)	0.2	0.1	0.1	0.2	0.1	0.3



New Feature: Switching binary outputs based on PI sequence:

Binary outputs and fans can now directly correspond to PI levels. In order to achieve this, select the required loop, sequence and switching level with the output parameter of the corresponding binary output or fan.

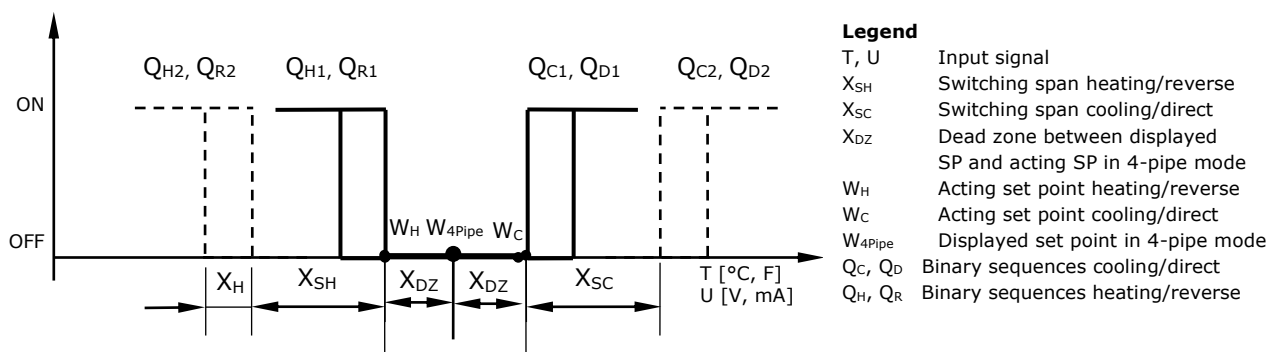
Digital control sequence

Parameter	Description	Range	Default
1L 16	Action of stages: 0= cumulative: stage 1 stays on when 2 comes on 1= single: stage 1 turns off when 2 comes on 2= digital: stage 1 only, stage 2 only, then stage 1 plus 2	0-2	0
1L 17	X _{OBH} : Offset for heating/reverse binary sequences. Offset shifts the acting set point away from the displayed or saved set point	per input	0%
1L 18	X _{OBC} : Offset for cooling/direct binary sequences. Offset shifts the acting set point away from the displayed or saved set point	per input	0%
1L 19	X _{SH} : Switching span heating. Switching span is the difference between set point and measured value required for the next binary stage to activate.	per input	2%
1L 20	X _{SC} : Switching span cooling. Switching span is the difference between set point and measured value required for the next binary stage to activate.	per input	2%
1L 21	X _H : Switching hysteresis	per input	0.5%
1L 22	Switching delay min running time for binary stage	00:00s...15:10h MM:SS...HH:MM	00:10 MM:SS
1L 23	Switching delay min stopping time for binary stage	00:00s...15:10h MM:SS...HH:MM	00:10 MM:SS
1L 24	Activation of reverse/direct (heat/cool) sequence OFF= activates based on demand ON = follows heat/cool state of controller: Set manually or by auxiliary function (3FU)	ON/OFF	OFF
1L 25	Delay for heat/cool changeover in case above parameter is OFF	00:00s...15:10h MM:SS...HH:MM	05:00 MM:SS
1L 26	Max allowed set point deviation (will generate an alarm if enabled in alarm parameters), Disabled if set to 0.	per input	0.0

- ➔ Cumulative stage action (L16=0) is typically used in electric heat applications, and single stage action (L16=1) in fan speed applications. Digital stage action (L16=2) is especially useful in electric heat applications to generate three steps with just two outputs. For example: Step 1=100W, step 2=200W, step 3=300W.

	Cumulative	Single	Digital
Stage 1	Q ₁	Q ₁	Q ₁
Stage 2	Q ₁ +Q ₂	Q ₂	Q ₂
Stage 3			Q ₁ +Q ₂

- ➔ Switching hysteresis (L21) is the difference between switching on and switching off. A small hysteresis will increase the number of switching cycles and thus the wear on associated equipment.
- ➔ With minimum running time delay (L22) cumulative stages will not switch on simultaneously. With a sudden demand or initial startup, power stage 2 will not start earlier than 10 seconds (default value) after stage 1 has been initiated. Likewise, after a stage is switched off, it will remain switched off until L23 is expired. This is to avoid rapid switching.



Configuration of binary outputs

The binary outputs may be used to control fans, floating point actuators, single stages, or PWM outputs. In case an output is defined for more than one function the following priority applies:

Priority	Physical outputs	DO1	DO2	DO3	DO4	DO5
1	1 fan outputs up to 3 speeds each	FAN 1				
		speed 1	speed 2	speed 3		
		1FA 0 ≥ 1	1FA 0 ≥ 2	1FA 0 = 3		
	1 lead-lag group	stage 1	stage 2	stage 3		
2	3 floating point outputs:	FO1		FO2		
		open	close	open	close	
3	7 digital or PWM outputs:	DO1	DO2	DO3	DO4	DO5

Fan configuration

Parameter	Description	Range	Default
1F 00	Select the number of fan speeds	0 – 3	0
1F 01	Selection of control loop for fan 0 = Fan output disabled, 1 = Loop 1 2 = Not used 3 = Not used 4 = Not used 5 = Operation mode (on, when operation mode is on, occupied and unoccupied) 6 = Manual positioning/time schedule controlled 7 = Occupied mode (on if occupied, off if unoccupied) New Feature! 8 = Not used 9 = New Feature: Lead-Lag for binary outputs: DO1 → DO2 → DO3	0 – 9	1
1F 02	Fan outputs select active sequence of control loop if F01=1-4 or select active state of controller if F01=5,7: 0 = if 1F01 = 1-4: Heating, Reverse 1 = if 1F01 = 1-4: Cooling, Direct 2 = if 1F01 = 1-4: Heating and Cooling (2 pipe system) 3 = if 1F01 = 5,7: Demand based on Heating, Reverse 4 = if 1F01 = 5,7: Demand based on Cooling, Direct 5 = if 1F01 = 5,7: Demand based on Heating and Cooling	0 – 5	2
	When F01 = 6: Manual positioning/time schedules 0 = Allow time schedule only 1 = Allow manual positioning and time schedules		
1F 03	New Feature! Fan behavior when setpoint is satisfied if F01 = 1-8: 0 = Fan off when no demand 1 = Lowest fan speed on when occupied. Fan switches off when not occupied. 2 = Lowest fan speed on in cooling mode. Fan switches off in heating mode. 3 = Lowest fan speed on when operation mode on, occupied and unoccupied (mold protection)	0...3	0

Note: Fan output settings continued on next page.

- ➔ The active fan speed is defined by the binary sequence of the control loop (L17-L23) or if F10= ON the output of the PI sequence of this control loop.
Automatic fan speeds can be overridden by keypad if manual mode is enabled (UP02 = ON). If fan should be manually disabled F08 need to be set to ON.
- ➔ Demand based functions: The fan will start automatically in case there is a demand on the heating or cooling sequence of a specific control loop (defined in F01) or the controller if F01=5. Startup and switch off delays will apply.
- ➔ With manual positioning (F01=6) control the fan by time schedule or manually. Setting F02=0 will disable manual positioning through the operation terminal. The fan will then only be controlled by time schedule. Set F02=1 to allow manual positioning.

Startup, switch off delays and alarms

Parameter	Description	Range	Default
1F 04	Startup delay: Delay before starting fan. Other control outputs connected to the same control loop are disabled during startup delay. New Feature: Extended delays	00:00s...15:10h MM:SS...HH:MM	00:00s MM:SS
1F 05	Switch off delay: If the fan should extend its run time after the control valves are closed. Set the time to extend fan run time after control outputs switch off. New Feature: Extended delays	00:00s...15:10h MM:SS...HH:MM	00:00s MM:SS
1F 06	Choose alarms to set fan to 100%. In case of conflicting alarms, the fan will be switched off. See section alarms for further details. ▽▽▽▽▽▽▽▽ Alarm: 1 2 3 4 5 6 7 8	Triangle shown = alarm selected	▽▽▽▽▽▽▽▽
1F 07	Choose alarms to switch off fan. See section alarms for further details. ▽▽▽▽▽▽▽▽ Alarm: 1 2 3 4 5 6 7 8	Triangle shown = alarm selected	▽▽▽▽▽▽▽▽

➔ Startup and switch off delay.

During the startup or the switch off delay of a fan module all other control outputs assigned to control loop 1 for fan module 1 will be deactivated. This prevents overheated electrical heating batteries for example.

➔ Alarm or interlock selection:

Every may be activated or deactivated based on a series of alarms or interlocks. Alarms specify fault conditions of the control application; interlocks may be used to offer additional control options. Alarms operate as well when the controller is in off mode. Interlocks can be selected to be active in off mode or not.

To activate the output while an alarm is pending, select the alarm in F07. To deactivate the output with the alarm pending, select it in F08. If both an alarm is active which is selected in F07 and another alarm is active that is selected in F08, the output will be switched off.

Fan output settings for manual control and DO/AO selection

Parameter	Description	Range	Default
1F 08	New Feature: Manual fan switch off mode When F01 = 1-4 or 6:Manual switch off of fan OFF = Fan may not be switched off manually while assigned to control loop ON = Fan can be set to off manually while assigned to control loop	ON/OFF	OFF
1F 09	New Feature: Choose output DO or AO: OFF = DO, ON = AO FAN1: OFF = DO1-DO3, ON = AO1 Note: In case F09 = ON, analog output signal must be defined with analog output parameters 1A02 to 1A06 for fan1.	ON/OFF	OFF

Fan output configuration in PI mode (F10 = ON)

Parameter	Description	Range	Default
1F10	New Feature: Use PI sequence as input for fan (not binary sequence)	ON/OFF	OFF
1F11	Limit for fan speed 1 if F10 = ON Note: Shared parameter: Changing this value, will as well change F15.	0...100%	20%
1F12	Limit for fan speed 2 if F10 = ON Note: Shared parameter: Changing this value, will as well change F16.	0...100%	50%
1F13	Limit for fan speed 3 if F10 = ON Note: Shared parameter: Changing this value, will as well change F17.	0...100%	80%
1F14	Hysteresis for fan speeds if F10 = ON	0...100%	15%

➔ New Feature: Fan output in PI mode

Switch fan based on PI sequence rather than binary sequence of control loop. Select control loop and sequence with parameters F01 and F02, set F10 = ON and define switching limits for different fan speeds with F11 to F13. The hysteresis for all fan speeds is identical and is set with F14.

Lead-lag configuration

Parameter	Description	Range	Default
1F 00	Total number of lead/lag stages	0 – 3	0
1F 01	Selection of control loop for fan 9 = New Feature: Lead-lag configuration: OUT1 → OUT2 → OUT3	0 – 9	1
1F 02	In lead-lag mode: Define number of simultaneous active outputs. If set to 0 or 1, then only one output will be active at the same time, if set to 2 than 2 outputs will be active at each time. For this to work at least 3 outputs must be activated.	0 – 5	2
1F 03	In lead-lag mode (F01 = 9): Step length of F15 0 = Steps defined in F15 are counted in minutes 1 = Steps defined in F15 are counted in hours 2 = Steps defined in F15 are counted in days (24h)	0...3	0
1F 04	Startup delay: Delay before starting new stage. Other outputs assigned to same control loop are disabled during delay. New Feature: Extended delays	00:00s...15:10h MM:SS...HH:MM	00:00s MM:SS
1F 05	Switch off delay: Delay while switching off old stage. Other outputs assigned to same control loop are disabled during delay. New Feature: Extended delays	00:00s...15:10h MM:SS...HH:MM	00:00s MM:SS
1F 06	Choose alarms to activate all assigned outputs. In case of conflicting alarms, all outputs assigned to the lead – lag module will be switched off. See section alarms for further details. ▽▽▽▽▽▽▽▽ Alarm: 1 2 3 4 5 6 7 8	Triangle shown = alarm selected	▽▽▽▽▽▽▽▽
1F 07	Choose alarms to switch off fan. See section alarms for further details. ▽▽▽▽▽▽▽▽ Alarm: 1 2 3 4 5 6 7 8	Triangle shown = alarm selected	▽▽▽▽▽▽▽▽
1F 08	Manual control of output rotation When F01 = 9: Output rotation OFF = Rotation may not be controlled manually ON = Rotation can be controlled manually Note: setting an output to manual while in output rotation mode, will interrupt output rotation indefinite until set back to auto mode.	ON/OFF	OFF
1F15	New Feature: In output rotation mode (F01 = 9): Running time in minute, hours or days. (Set with F03). While in auto mode, the controller will switch to the next output after this time has expired. Note: Shared parameter: Changing this value, will as well change F11.	0...255	50
1F16	New Feature: If F01 = 9: Current active output (1-3) Note: Shared parameter: Changing this value, will as well change F12.	0-3	-
1F17	New Feature: If F01 = 9: Run time in minute, hours or days (set with F03) for current of output since last switch. Note: Shared parameter: Changing this value, will as well change F13.	0....255	-

➔ Lead – lag configuration:

The fan module may be used to rotate a group of binary outputs based on their run time. This is commonly used with pumps or where multiple devices control one function. To use lead-lag, activate it by selecting number of outputs involved with F00, choose function by setting F01 = 9. The number of simultaneous active outputs is set with F02 (1 or 2). Choose running time step size with F03 for minutes, hours or days and set running time of each output with F15 (Step size may only be defined with V1.2R4 and later).

Select if manual control is allowed with F08. The current active output may now be seen in F16, the current running time since the last switch is visible with F17. These settings and times may be changed through access to parameters.

Note: Parameters F10 to F14 may change while this mode is active.

➔ New feature: Configure demand based operation and supervision of each output during lead-lag mode:

If the binary outputs are assigned to the lead lag module, they can now have lag and disable interlocks assigned to them. Assign a maximum delay alarm to an interlock and then assign this interlock to the lead lag module for simultaneous activation of all its outputs.

➔ Assign an alarm input to an interlock and then assign this interlock to the disable parameter of the individual outputs. If the lead output is disabled, the lag output will be activated instead.

➔ New Feature

Following options are possible: Lead – Lag, Lead – Lag – Lag, Lead – Lead – Lag, Lead – Lead – Lead.

They can be changed during operation with interlocks. Additionally there is a standby output that can replace any of the outputs.

Floating output configuration

Parameter	Description	Range	Default
1d 00	Enable digital or floating point output 1d00 = OFF: DO1, DO2 are two digital/PWM outputs 1d00 = ON : DO1, DO2 is one floating point output (DO1 open, DO2 close)	ON/OFF	OFF
1d 01	Select control loop or special function (0= OFF) 1 = Loop 1 2 = Not used 3 = Not used 4 = Not used 5= Special functions (Dehumidification, Economizer, etc.) 6= Manual positioning/time schedule controlled 7= Controller state functions 8 = Not used 9 = New Feature: Proportional function: Output assigned to an input 10 = Not used	0-9	0
1d 02	When 1d01=1-4 configure output: 0= Heating/reverse 1= Cooling/direct 2= Heating and cooling (2 pipe) New Feature: 3= 100% on if loop in heating mode: Reversing valve mode 4= 100% on if loop in cooling mode: Reversing valve mode	0-12	0
	When 1d01=5, select function: 0 = Not used 1 = Economizer: Outdoor air damper actuator. See 5FU for more details. 2 = Economizer: Return air damper actuator. See 5FU for more details.		
	When 1d01 = 6 Manual positioning/time schedules 0 = Allow time schedule only 1 = Allow manual positioning and time schedules		
	When 1d01=7 select state functions: 0= ON if controller operation state is ON 1= ON while demand on any output 2= ON while controller in heating mode 3= ON while controller in cooling mode 4= ON if controller state is occupied, OFF if unoccupied		
	New Feature: When 1d01 = 9: Select input for proportional function. Minimum and maximum limits are defined with 1d14 and 1d15: 0 = not active, 1 = UI1 to 12 = VI4		
1d 03	New Feature: When 1d01=6, 7 and 9: Select reaction on on/off/disable operation mode 0 = output is off, when operation mode is off 1 = output is off, when operation mode is disabled 2 = operation mode has no effect on output	0-6	0
1d 04	Running time (Time for actuator to run from fully open to fully close)	00:00s...15:10h MM:SS...HH:MM	00:00s MM:SS
1d 05	Switching difference for floating point signal: to reduce the switching frequency of the actuator. The actuator will only move if the running time to move the actuator from its current position to the target position is larger than this parameter.	00:00s...15:10h MM:SS...HH:MM	00:05s MM:SS

This table is continued on next page.

- ➔ With manual positioning (d01=6) position the output by time schedule or manually (0...80% in 0.5% steps). Setting d02 to 0 will disable manual positioning. The output will then only be controlled by time schedule. Set d02 to 1 to activate manual control of the output.
- ➔ For floating point outputs the running time of the actuator used needs to be specified with 1d04. Running time is defined as the time required for the actuator to run from fully open to fully closed and vice versa. Actuators with a fixed running time are recommended. Once fully open or fully closed the running time for the actuator is extended for a full run-time cycle. This will allow the actuator position to be synchronized in case it has been moved during off time or an actuator with variable running time was used.
- ➔ State functions (1d01=7) fully open the output based on certain conditions with or without a demand for heating or cooling. In Energy Hold OFF mode (EHO) the output will be off.
Note: From V1.2R6 onwards, this function is combined with d03.

Floating outputs configuration continued

Parameter	Description	Range	Default
1d 06	Not used		
1d 07	Choose alarm to set output to 100% (output 0% on conflicting alarms) ▽▽▽▽▽▽▽▽ Alarm: 1 2 3 4 5 6 7 8	Triangle shown = alarm selected	▽▽▽▽▽▽▽▽
1d 08	Choose alarm to set output to 0% (output 0% on conflicting alarms) ▽▽▽▽▽▽▽▽ Alarm: 1 2 3 4 5 6 7 8	Triangle shown = alarm selected	▽▽▽▽▽▽▽▽
1d 09	Not used	ON/OFF	OFF
1d 10	Not used	0...12750h	0
1d 11	Not used	ON/OFF	OFF
1d 12	Not used	0...100%	0%
1d 13	Not used	0...100%	0%
1d 14	Proportional function based on input (1d01 = 9): Minimum limit : If 1d15 > 1d14: when input value is above this limit, output starts to increase. If 1d15 < 1d14: when input value is below this limit, output starts to increase. Note: shared parameter: changing this value, will change as well 1d12	0...100%	0%
1d 15	Proportional function based on input (1d01 = 9): Maximum limit : If 1d15 > 1d14: when input value is above this limit, output is at 100%. If 1d15 < 1d14: when input value is below this limit, output is at 100%. Note: shared parameter: changing this value, will change as well 1d13	0...100%	0%

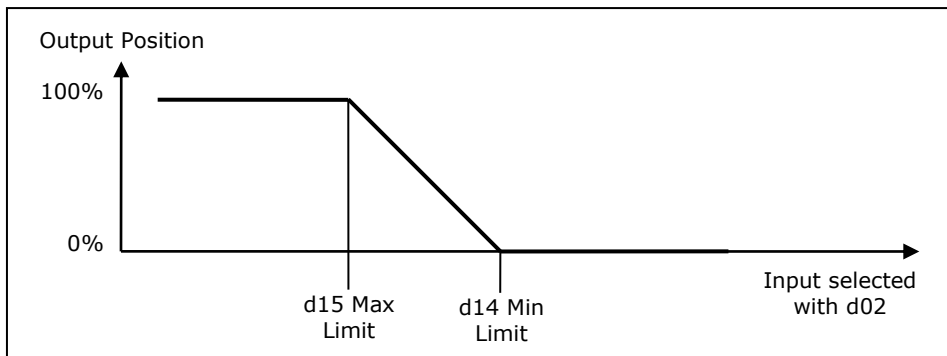
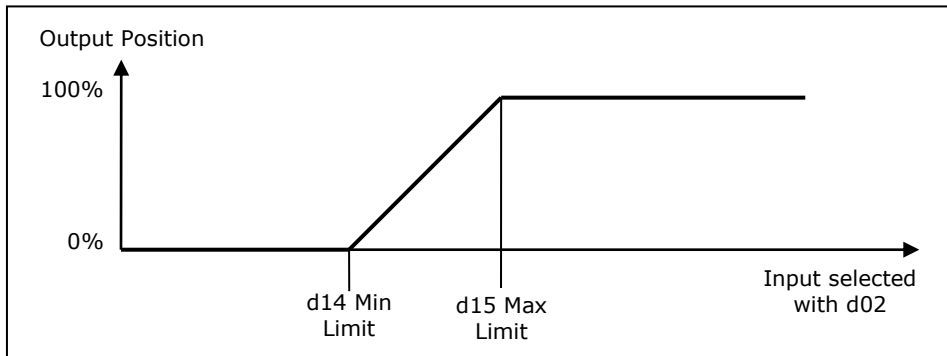
➔ Alarm or interlock selection:

Every may be activated or deactivated based on a series of alarms or interlocks. Alarms specify fault conditions of the control application; interlocks may be used to offer additional control options. Alarms operate as well when the controller is in off mode. Interlocks can be selected to be active in off mode or not.

To activate the output while an alarm is pending, select the alarm in d07. To deactivate the output with the alarm pending, select it in d08. If both an alarm is active which is selected in d07 and another alarm is active that is selected in d08, the output will be switched off.

➔ New Feature: Proportional function based on input:

The position of a floating output may be based on an input value. The input is selected with d02. Two limits define the proportional range: A minimum and a maximum limit. Depending on this limits the output may be opened with a sinking or a rising input signal.



Binary output configuration (d00=OFF)

Parameter	Description	Range	Default
1d 01	Select control loop or special function (0= OFF) 1 = Loop 1 2 = Not used 3 = Not used 4 = Not used 5= Special functions (Dehumidification, Economizer, etc.) 6= Manual positioning/time schedule controlled 7= Controller state functions 8 = Not used 9 = New Feature: Binary output assigned to an input 10 = New Feature: Binary output assigned to lead/lag module	0-10	0
1d 02	When 1d01=1-4 configure output in loop mode: 0= Heating/reverse 1= Cooling/direct 2= Heating and cooling (2 pipe) New Feature: 3= On if loop in heating mode: Reversing valve mode 4= On if loop in cooling mode: Reversing valve mode 5= New Feature for V1.2R5: On while demand in heating or cooling mode	0-8	0
	When 1d01=5, select function: 0 = Not used 1 = Economizer: Outdoor air damper actuator. See 5FU for more details. 2 = Economizer: Return air damper actuator. See 5FU for more details.		
	When 1d01 = 6 Manual positioning/time schedules 0 = Allow time schedule only 1 = Allow manual positioning and time schedules		
	When 1d01=7 select state functions: 0= ON if controller operation state is ON 1= ON while demand on any output 2= ON while controller in heating mode 3= ON while controller in cooling mode 4= ON if controller state is occupied, OFF if unoccupied NEW!		
	When 1d01 = 9: Select input for switch function. Switching limits are defined with 1d14 and 1d15: 0 = not active, 1 = UI1 to 8 = VI4		
	When 1d01 = 10: Select module for lead/lag module. 0 = module 1 not demand based 1 = module 1, if demand on loop 1, heating only 2 = module 1, if demand on loop 1, cooling only 3 = module 1, if demand on loop 1 heating & cooling		
1d 03	When 1d01=1-4: Select sequence 0 = Operation mode, Output is active when mode is active 1 = binary mode: Stage 1 to 6 = binary mode: Stage 6	0-6	0
	When 1d01=6, 7 and 9: Select reaction on on/off/disable operation mode 0 = output is off, when operation mode is off 1 = output is off, when operation mode is disabled 2 = operation mode has no effect on output		
	When 1d01=10 Select stages for lead – lag module 0 = standby (only for lead – lag module) 1 = output 1 2 = output 2 3 = output 3		
1d 04	Switch off delay: Time the output signal needs to be off, before output switches off New Feature: In PWM mode: Different function. See next section.	00:00s...15:10h MM:SS...HH:MM	01:30
1d 05	Switch on delay: Time the output signal needs to be on, before output switches on. With state functions, all control outputs are disabled during switch ON delay. New Feature: In PWM mode: different function. See next section	00:00s...15:10h MM:SS...HH:MM	00:05
1d 06	Activate PWM, set cycle time, seconds (>0 activates, 0 deactivates)	00:00s...15:10h MM:SS...HH:MM	00:00

➔ State functions (1d01=7) activate the output based on certain conditions with or without a demand for heating or cooling, in either occupied or unoccupied mode. In OFF mode the output will be off.
Note: From V1.2R6 onwards, this function is combined with d03.

Binary output configuration continued

Parameter	Description	Range	Default
1d 07	Choose alarm to set output to ON (output OFF on conflicting alarms) ▽▽▽▽▽▽▽▽ Alarm: 1 2 3 4 5 6 7 8	Triangle shown = alarm selected	▽▽▽▽▽▽▽▽
1d 08	Choose alarm to set output to OFF (output OFF on conflicting alarms) ▽▽▽▽▽▽▽▽ Alarm: 1 2 3 4 5 6 7 8	Triangle shown = alarm selected	▽▽▽▽▽▽▽▽
1d 09	d09 and d10 only function if output is in binary mode: OFF: Do not count run time and reset counter to 0 ON: Count run time in hours while a binary output is switched on	ON/OFF	OFF
1d 10	Trigger function alarm when run time is reached (may be used as maintenance alarm), 0 = alarm disabled	0...12750h	0
1d 11	Uses PI sequence instead of binary sequence of PI loop Note: changing this value, will automatically as well change 1d13.	ON/OFF	OFF
1d 12	Activation limit if based on PI (1d01 = 1-4 AND 1d11 = ON), if value above this limit, output switches on. Note: shared parameter: changing this value, will change as well 1d14	0...100%	50%
1d 13	Deactivation limit if based on PI (1d01 = 1-4 AND 1d11 = ON), if value below this limit, output switches off. Note: shared parameter: changing this value, will change as well 1d15	0...100%	40%
1d 14	Activation limit if based on UI (1d01 = 9: if value is above this limit, output switches on. Note: shared parameter: changing this value, will change as well 1d12	0...100%	50%
1d 15	Deactivation limit if based on UI (1d01 = 9: if value is below limit, output switches off. Note: shared parameter: changing this value, will change as well 1d13	0...100%	10%

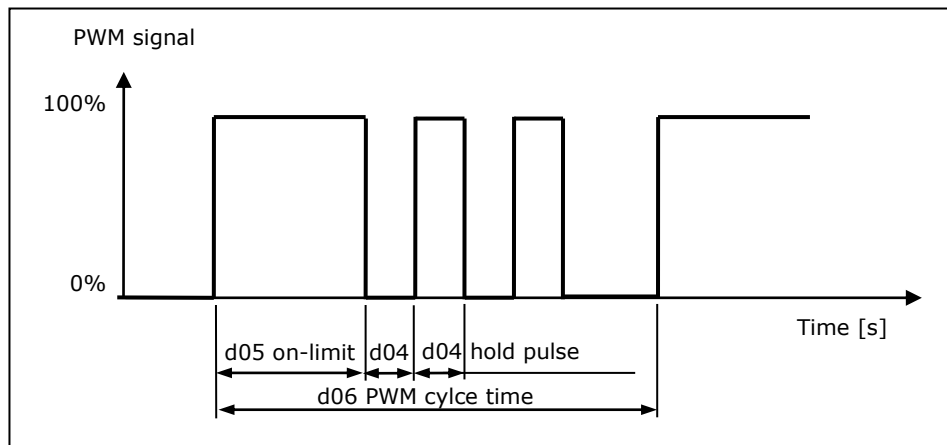
- ➔ **With manual positioning (1d01=6)** position the output by time schedule or manually (ON, OFF or 0...80% in 0.5% steps for PWM outputs). Setting 1d02 to 0 will disable manual positioning. The output will then only be controlled by time schedule. Set 1d02 to 1 to activate manual control of the output.
- ➔ **Alarm or interlock selection:**
Every may be activated or deactivated based on a series of alarms or interlocks. Alarms specify fault conditions of the control application; interlocks may be used to offer additional control options. Alarms operate as well when the controller is in off mode. Interlocks can be selected to be active in off mode or not.
To activate the output while an alarm is pending, select the alarm in d07. To deactivate the output with the alarm pending, select it in d08. If both an alarm is active which is selected in d07 and another alarm is active that is selected in d08, the output will be switched off.
- ➔ **Run time counter (d09):**
Run time counters can be used to sum up the accumulated runtime of a device connected to a binary output. The counter runs up to 65536 hours and saves the run time every hour to EEPROM. The run time hours and the status of the binary output will be displayed when stepping through the available display pages with the operation terminal.
- ➔ **Maintenance alarm (d10):**
The run time counter may be used to trigger a maintenance alarm once a certain run time is exceeded. Select limit to trigger a maintenance alarm. The limit is selectable in steps of 256 hours. Setting the time to 0 disables the maintenance alarm.
Note: An alarm must be assigned to maintenance alarm by setting AL0 = 3 on one alarm.
- ➔ **New Feature: Switch binary output based on PI-sequence:**
This New Feature allows a direct response to PI output value. So no alarms or interlocks have to be used for a simple limit switch. Switch output based on PI sequence rather than binary sequence of control loop. Select control loop and sequence with parameters d01 and d02, set d11 = ON and define switching limits with d12 and d13.
- ➔ **New Feature: Switch binary output based on input value:**
Activate the function with d01 = 9. Select the input with d02 and define the switching limits with d14 and d15. Reversing the switching limits, will reverse the switching function of the output.
Note: The switch based on inputs is as well used for the light switch function.
- ➔ **New Feature: Lead – Lag function:**
The lead – lag function is defined in the fan module. A binary output can be assigned to a lead – lag function. Either as stage that will be rotated based on the settings of the function or as standby output. The standby output will be activated when a stage output fails. Only one standby output can be activated per lead – lag function.
Each output assigned to a stage may be disabled using interlocks or alarms. In this case it is disabled, the lead – lag function activates the next stage.

Binary output in PWM configuration (d00=OFF)(d06 ≠ 0)

Pulse width modulation (PWM) mode is enabled with 1d06. In PWM mode the digital output will be switched on/off once per cycle. The on and off times are calculated according to the PI settings of the respective control sequence. It is not recommended to use cycle times below 10 Minutes for relays outputs as the lifetime of the relays will be shortened with frequent switching. The settings are identical to the output in binary configuration. Only difference is for parameter d04 and d05:

Parameter	Description	Range	Default
1d 04	New Feature: In PWM mode: Hold pulse if on-limit is reached. This feature is used to reduce energy consumption for example for wax type valves where the wax is heated to open the valve.	00:00s...15:10h MM:SS...HH:MM	01:30
1d 05	New Feature: In PWM mode: Energy-limiter: Maximum ON time for PWM outputs, Output will be limited to be active during the time indicated here. After the value is exceeded, it will switch on and off based on frequency defined with 1d04. Note: setting this value to 00:00 deactivates the time limitation.	00:00s...15:10h MM:SS...HH:MM	00:05
1d 06	Activate PWM, set cycle time, seconds (>0 activates, 0 deactivates)	00:00s...15:10h MM:SS...HH:MM	00:00

New Feature: Minimum and maximum limits for PWM outputs. Using d04 and d05 the on time of the PWM signal may now be limited to the value defined with d05. After the limitation has been exceeded the output will cycle with a frequency that is defined with d04. Setting d05 = 00:00 will deactivate the limitation function.



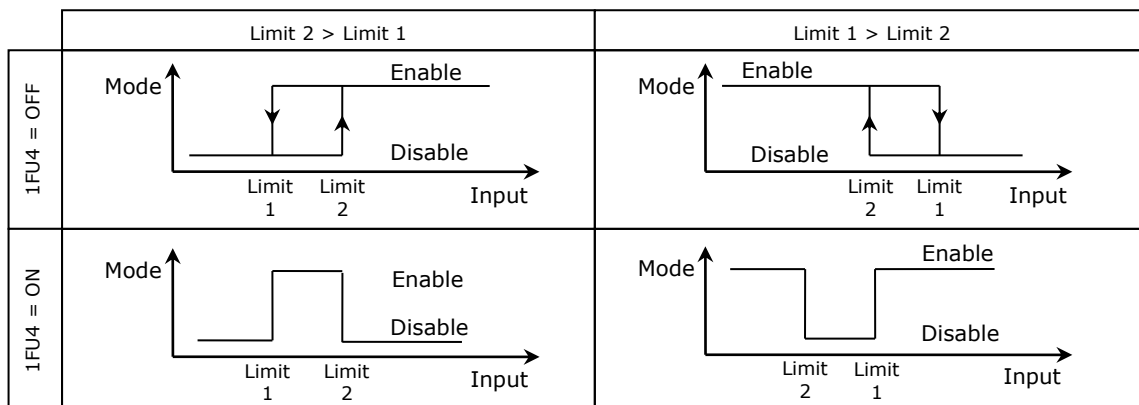
→

Auxiliary functions

1Fu Enable/disable of controller based on inputs and alarm conditions

Parameter	Description	Range	Default
1Fu 0	Select input for remote enable function: 0 = not active, 1 = UI1 to 8 = VI4	0...8	0
1Fu 1	Manual override permitted (without waiting for delay). This function allows overriding of the enable conditions by manually starting the controller; The controller will switch off again if the running conditions are not met until the disable delay is expired. This function is required, where the controller needs to create the allowed input condition for example by running a fan while differential pressure is used as enable condition.	ON/OFF	OFF
1Fu 2	Enable delay (seconds) = the time the enable condition must be met before the controller is enabled New Feature: Extended delays	00:00s...15:10h MM:SS...HH:MM	05:00 MM:SS
1Fu 3	Disable delay (seconds) = the time the disable condition must be met before the controller is disabled New Feature: Extended delays	00:00s...15:10h MM:SS...HH:MM	05:00 MM:SS
1Fu 4	Range of limits (See table below for graphical explanation): OFF = When limit 2 (e.g. 60) is larger than limit 1 (e.g. 40) the controller will be enabled when the input value is greater than limit 2 (e.g. 60) and disabled when the input value is below limit 1 (e.g. 40). When limit 2 (e.g. 40) is lower than limit 1 (e.g. 60) the controller will be enabled when the input value is lower than limit 1 (e.g. 40) and disabled when the input value is above limit 2 (e.g.10). ON = When limit 2 (e.g. 60) is above limit 1 (e.g. 40) the controller will be enabled when the input value is between limit 1(e.g. 40) and limit 2 (e.g. 60). When limit 2 (e.g. 40) is below limit 1 (e.g. 60) the controller will be enabled when the input value is below limit 2 (e.g. 40) or above limit 1 (e.g. 60).	ON/OFF	OFF
1Fu 5	Input limit 1 (See 1Fu 4 for description)	per input range	10
1Fu 6	Input limit 2 (See 1Fu 4 for description)	Per input range	90
1Fu 7	Disable controller in case of selected alarms are active Note: Switch-off delays still apply when an alarm becomes active	Triangle shown = alarm selected	▽▽▽▽▽▽▽▽

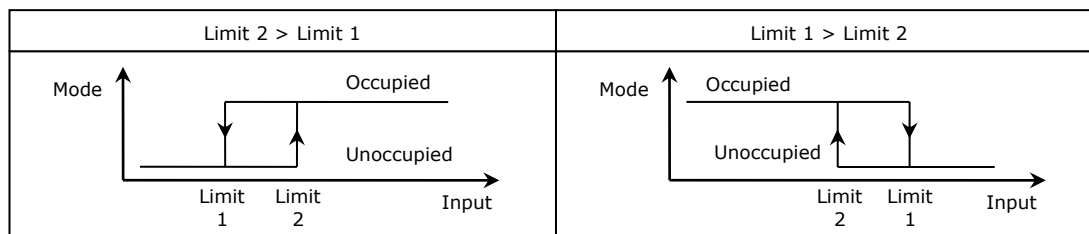
- ➔ Enable or disable the controller based on high or low input limits and alarm status. The alarm status register may be used as *and* function where several conditions must be met before the controller is allowed to function.
- ➔ Time schedules do not override the enable function.



2Fu Switch occupied and unoccupied modes based on input values

2Fu 0	Select input for remote occupied – unoccupied change function: 0 = not active, 1 = UI1 to 8 = VI4	0–8	0
2Fu 1	Unoccupied mode delay (seconds) = the time the input needs to be inactive before the controller switches to unoccupied mode. New Feature: Extended delays	00:00s...15:10h MM:SS...HH:MM	05:00 MM:SS
2Fu 2	Input limit 1 to signal unoccupied or door opened	per input range	10
2Fu 3	Input limit 2 to signal occupied or door closed	Per input range	90
2Fu 4	Select input for door contact in combination with input defined under 2Fu 0: 0 = not active, 1 = UI1 to 8 = VI4 If door contact input is defined, the controller will only go to unoccupied mode, if the door is opened and after the door closes, there is no movement registered on the input selected in 2Fu 0	0–8	0
2Fu 5	New Feature Select interlocks or alarms for window contact. If any interlock activates, the function will change to unoccupied mode, independent of door state.	Triangle shown = alarm selected	▽▽▽▽▽▽▽▽

- ➔ Use occupied/unoccupied mode changeover with key card switches, occupancy sensors, etc.
Activate function by selecting the input to control occupied/unoccupied mode. Set the limits (2FU2 and 2FU3) to the input values that indicate when the room is occupied or unoccupied. This can be done through a switch or for example a CO2 sensor.
Configure occupied/unoccupied changeover with loop configuration parameter 1L07 and 1L27 for each affected control loop.
- ➔ **New Feature:** For door contact applications: The use of a key switch may be avoided by using a door contact and a motion detector. The motion detectors should be placed in each room in order to detect the presence of an occupant. The room will automatically go to unoccupied mode once the door is opened and closed again and if there is no movement in the room after the door closes. The delay of the motion detector MUST therefore be less than the unoccupied mode delay defined with 2FU1; else the controller will stay in occupied mode. Ideal is to keep the delay of the motion detector output to below 30 seconds.
The moment there is movement in the room or the door is opened; the room will go to occupied mode again and will not go to unoccupied unless the door is opened and closed again.
- ➔ Following are the occupied/unoccupied mode switch possibilities:

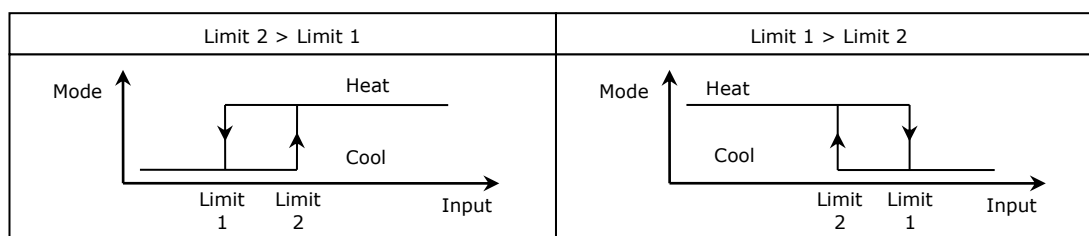


3Fu Switch heating and cooling state based on input values

Parameter	Description	Range	Default
3Fu 0	Select input for remote heat – cool change function: 0 = not active or based on control loop, 1 = UI1 to 8 = VI4	0...8	0
3Fu 1	If heat – cool is based on a control loop, select control loop here (3Fu 0 must be set to 0) 0 = not active or based on universal input 1 = Based on heat – cool status of control loop 1	0...1	0
3Fu 2	New Feature: extended delays: Activation delay (Seconds) = delay before heat – cool mode is switched. This delay is to avoid unnecessary switching	00:00s...15:10h MM:SS...HH:MM	05:00 MM:SS
3Fu 3	Input limit 1 (Cool limit) applies only if based on input	Per input range	20%
3Fu 4	Input limit 2 (Heat limit) applies only if based on input	Per input range	40%

➔ The heating or cooling state of the controller may be controlled from a central location by a binary (digital) contact or temperature levels of outside air or supply media. The state may also depend on heating or cooling demand of a control loop. Note: The control loop used to determine the heat /cool state must be set to demand-based heating and cooling with (L24 = OFF).

➔ Set limit 1 and limit 2 to switch between heating and cooling with options below:



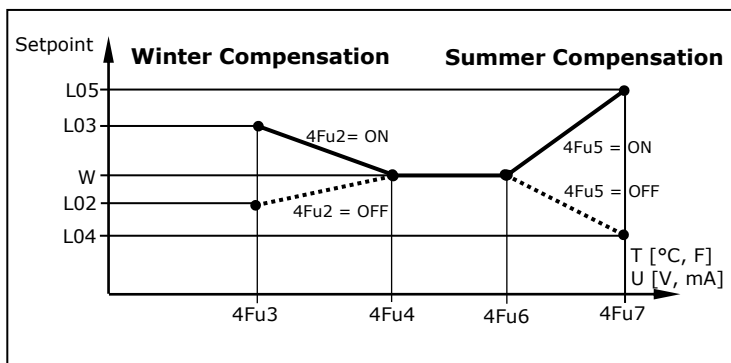
- ➔ When switching heating/cooling state with an external switch set input to RT/DI mode and connect switch to signal ground. Ground levels of all involved controllers must be the same.
- ➔ For supply media temperature we recommend switching to cooling at limit1 = 16°C/61°F and to heating at limit2 = 28°C/83°F. For outdoor temperature we recommend switching to cooling at limit1 = 28°C/83°F and to heating at limit2= 16°C/61°F outdoor temperature.
- ➔ Above recommendations are given as suggestions. The ideal settings may be different on the actual project depending on climatic and system conditions.

4FU Summer/winter compensation of control loop setpoints

Parameter	Description	Range	Default
4Fu 0	Selection of Compensation Input 0 = not active, 1 = UI1 to 8 = VI4	0...8	0
4Fu 1	Type of compensation OFF = Offset: The setpoint shifts up or down based on an input signal ON = Setback: The setpoint is shifted towards loop setpoint min max based on an input signal.	ON, OFF	OFF
Offset setpoint compensation: 4Fu1 = OFF			
4Fu 2	Shift is direct or reverse acting OFF = Direct: Rising input value increases setpoint ON = Reverse: Rising input value decreases setpoint	ON, OFF	OFF
4Fu 3	Input span required to shift setpoint one step: For example: An 4Fu3 value of 5% for a control loop set point with 0.5°C steps will change the set point by 0.5° for every 5% that the compensation input changes.	Per input range	10
4Fu 4	Input where setpoint shift is 0, This defines the value of the input signal where the control set point is not compensated	Per input range	50
Setback setpoint compensation: 4Fu1 = ON			
4Fu 2	Winter Compensation: OFF = setpoint is shifted negative to lower setpoint limit ON = setpoint is shifted positive to upper setpoint limit	ON, OFF	OFF
4Fu 3	Winter Compensation (Setpoint shift with low compensation signal) Lower Limit: input signal with maximum setpoint shift	Per input range	10
4Fu 4	Winter Compensation (Setpoint shift with low compensation signal) Upper Limit: Input signal at begin of setpoint shift.	Per input range	50
4Fu 5	Summer Compensation: OFF = setpoint is shifted negative to lower setpoint limit ON = setpoint is shifted positive to upper setpoint limit	ON, OFF	ON
4Fu 6	Summer Compensation (Setpoint shift with high compensation signal) Lower Limit: input signal at begin of setpoint shift	Per input range	60
4Fu 7	Summer Compensation (Setpoint shift with high compensation signal) Upper Limit: Input signal with maximum setpoint shift.	Per input range	80
4Fu 8	Hot / Cool Symbol while compensation is active OFF= Hide symbol ON= Show symbol	ON, OFF	OFF

- ➔ Summer/winter compensation changes the set point due to a change in an input value, typically, but not limited to, an outdoor temperature input. Activate summer/winter compensation with control loop configuration parameter (L05).
- ➔ For setpoint setback: Winter compensation starts when outside temperature drops below the upper limit of winter compensation (4FU4). At maximum winter compensation the actual set point will be equal to the control loop's minimum or maximum heating set point depending on the setting of 4FU2. Summer compensation starts when outside temperature exceeds the lower limit for summer compensation (4FU5). At maximum summer compensation the actual set point will be equal to the control loop's minimum or maximum cooling set point depending on 4FU5.
- ➔ Setting 4FU8 = ON indicates the state of compensation on the display by showing a heat – cool symbol.

Set point set back 4FU1 = ON



5Fu: Economizer (free heating or cooling), NEW algorithm!

Parameter	Description	Range	Default
5Fu 0	Assign Economizer to a control loop 0 = economizer function is disabled 1 = assigned to control loop 1... 2 = assigned to control loop 4	0...2	0
5Fu 1	Assign free heating or/and free cooling options 0 = economizer is disabled 1 = free heating is enabled 2 = free cooling is enabled 3 = free heating and free cooling is enabled	0..3	0
5Fu 2	Outdoor air sensor input (Temperature or Enthalpy): 0 = not active, 1 = UI1 to 8 = VI4 Note: Data range must be identical to return air sensor selected in 5Fu3 and input sensor of loop selected in 5Fu0.	0..10	0
5Fu 3	Return air sensor input (Temperature or Enthalpy): 0 = not active, 1 = UI1 to 8 = VI4 Note: data range must be identical to outdoor sensor selected in 5Fu2 and input sensor of loop selected in 5Fu0.	0..10	0
5Fu 4	If temperature sensors are used: Choose difference between outside air temperature and loop setpoint required to activate free heating or cooling. If enthalpy sensors are used: Choose difference between outside air enthalpy and return air enthalpy required to activate free heating or cooling Note: in order to prevent frequent activation / deactivation of mechanical heating or cooling, once conditions are met to activate free heating or cooling, only half the value of 5FU4 is required to maintain it.	Per input range	0
5Fu 5	New feature: extended delays: Delay time to activate mechanical heating or cooling in case supply air set point cannot be reached through free heating or cooling.	00:00s...15:10h MM:SS...HH:MM	05:00 MM:SS
5Fu 6	Disable economizer in case one of the selected interlocks/alarms is active. The interlocks may be assigned to outdoor humidity or pollution sensors	Triangle shown = interlock selected	▽▽▽▽▽▽▽▽

Functional description

The aim of the economizer function is to reduce energy consumption by utilizing situations where cooling or heating requirements may be satisfied or supported by outdoor air.

The economize function will first verify if there is demand from the loop. Once there is demand, it will compare the outdoor sensor with the return air sensor. If the situation is such that this would satisfy the demand, the outdoor damper will modulate. (for example if cooling mode, outdoor temperature or enthalpy is lower than the return air one.).

If in temperature sensor mode, it will check if the minimum difference outdoor temp to set point condition is fulfilled. If this is true, the economy cycle is activated for the time duration specified under 5FU5. If during this time the setpoint is reached, the counter will be reset. If not, mechanical cooling or heating will start once the delay is expired.

- ➔ To operate, the economizer needs to be assigned to a control loop. There are several possibilities to determine if the condition for free heating or cooling is satisfied. The economizer operates differently depending on the sensors attached to it.
- ➔ Outdoor air enthalpy, return air enthalpy:
Once there is heating or cooling demand, the economizer compares the enthalpy of return air with outdoor air. If the minimum difference condition defined with 5FU4 is met, mechanical heating or cooling is deactivated and the outdoor and return air dampers are modulated to achieve the predefined set point of the supply air. Once free heating or cooling is activated, only half of 5FU4 is required to maintain it. Mechanical cooling will resume, if the set point is not reached during the time specified in 5FU5 or difference drops below 5FU4/2.
The outdoor damper will modulate based on demand, as long as the outdoor enthalpy is below the return air enthalpy for free cooling or above it for free heating.
- ➔ Outdoor air temperature, return air temperature:
Once there is heating or cooling demand, the economizer compares the setpoint with the outdoor air and return air temperature. If the minimum difference condition defined with 5FU4 is met, mechanical heating or cooling is deactivated and the outdoor and return air dampers are modulated to achieve the predefined set point of the supply air. Once free heating or cooling is activated, only half of 5FU4 is required to maintain it. Mechanical cooling will resume, if the setpoint is not reached during the time specified in 5FU5 or difference drops below 5FU4/2.
The outdoor damper will modulate based on demand, as long as the outdoor temperature is below the return air temperature for free cooling or above it for free heating.
With 5FU6 an interlock may be used to disable the economizer if the outdoor air humidity or outdoor air pollution is too high to provide free cooling.

- Outdoor air temperature only:
Once there is heating or cooling demand, the economizer compares the setpoint with the outdoor air temperature. If the minimum difference condition defined with 5FU4 is met, mechanical heating or cooling is deactivated and the outdoor and return air dampers are modulated to achieve the predefined set point of the supply air. Mechanical cooling will resume if the setpoint is not reached during the time specified in 5FU5.
With 5FU6 an interlock may be used to disable the economizer if the outdoor air humidity or outdoor air pollution is for too high to provide free cooling.

Important note: All involved sensors must have the identical range settings (xu1 and xu2). This includes the sensor used for the control loop!

Communication configuration

Parameter	Description	Range	Default
CO 00	Bus plug-in hardware id (read only)	0...255	3
CO 01	Bus plug-in software version (read only)	0...255	-
CO 02	Bus plug-in software revision (read only)	0...255	-
CO 03	Communication address (must be unique in network)	1...127	1
CO 04	Baud rate: 0 = Auto-detect ¹ 1 = 9600 2 = 19200 3 = 38400 4 = 57600 5 = 76800 6 = 115200	0...6	0 (Auto-detect)
CO 05	Highest master	1...127	127
CO 06	Device object ID1 000000xx	0...99	00
CO 07	Device object ID2 0000xx00	0...99	00
CO 08	Device object ID3 00xx0000	0...99	01
CO 09	Device object ID4 0x000000	0...4	0
CO 10	Send I-am at boot	1, 0 (ON, OFF)	1 (ON)
CO 11	Not used.	0...255	255
CO 12	Not used.	0...255	255
CO 13	Not used.	0...255	255
CO 14	Not used.	0...255	255
CO 15	Auto increment ² and auto-build ³ of "device object name" flags: 0 = Auto increment and auto-build of device object name disabled 1 = Auto increment is enabled, auto-build of device object name disabled 2 = Auto increment disabled, auto-build of device object name enabled 3 = Auto increment and auto-build of device object name enabled	0...3	2

¹ "Auto-detect baud rate"-mode

When this option is selected, the AEC-BAC will detect the baud rate of the RS485 network. The AEX-BAC will stay in baud rate detection mode until it successfully decodes a package sent with a baud rate which is supported by the AEX-BAC. The baud rate detection mode will be entered once at hardware start-up and after a prolonged communication failure.

² "Auto increment"-function

When this function is enabled and an automatic AEC-PM1 parameter load is executed at power up of the controller, the following variables will be incremented and written back to the AEC-PM1 unit:

- CO03 Communication address. This is incremented only if the value is not already 127 with respect to CO05 – the address of the highest master. If CO05 is equal or less than the newly incremented value of CO03, then CO05 is written to be 127 (the maximum value of CO05 possible).
- CO06 ... CO09 Device object ID. This is incremented only if the value is not already "4194304".

³ "Auto-build of device object name"-function:

The BACnet standard requires that the each BACnet endpoint has a unique name on the network (device object name). The initial name of the AEX-BAC module is "AEX-BAC" equal for all devices. This means that device object names need to be edited manually.

Using the auto-build-function the device object name can be automatically assembled using the label AEX-BAC followed by the contents of CO06 – CO09 (The device object ID). For example AEX-BAC-01050001.

If one writes the device object name manually through BACnet, the auto-build function will automatically be disabled (CO15 set to 0 or 1). In this case, the auto increment function will not have an effect on the device object name, only on the device object ID.

Changing parameters of the controller through bus communication

It is possible to remotely changing parameters through an indirect read/write mode. Find details on the procedure required and how to interpret values in the application note: Access to control parameters through AEX-BAC V1.2

Object list

Device Object

Property	Description	Range/Type	R/W
APDU_Timeout	Time between retransmissions in milliseconds. This device does not support retransmissions, so this always reads as "0".	0	R
App Software Version	Controller Firmware Version (assembled by firmware) XX.XrYY ("X"= version; "Y"= revision)	String	R
Database_Revision	Increases if the settings change	16 bit	R
Daylight_Savings_Status	Daylight savings status of host controller	True/False	R
Description	Description of controller or location	32 Bytes	R/W
Device Address Binding	Address binds	List	R
Firmware_Revision	BACnet Firmware Revision	String	R
Local_Date	Date of host controller in format YYYY-MM-DD-DOW	YYYY-MM-DD-DOW	R
Local_Time	Time of host controller in format HH:MM:SS	HH:MM:SS	R
Max APDU Length Accepted	The maximum APDU length supported by this device is 480.	16 bit	R
Max Info Frames	The value specifies the maximum number of information frames the node may send before it must pass the token.	1	R/W
Max_Master	Number of the highest addressed node	1...127	R/W
Model_Name	"TCX2-abcde-BAC" (assembled by firmware) a = number of loops b = number of passive inputs c = number of universal inputs d = number of binary outputs e = number of analog outputs	String	R
Number_of_APDU_Retries	Number of retransmissions. This device does not support retransmissions, so this always reads as "0".	0	R
Object_Identifier	Device object identifier (CO06...CO09)	22 bit	R/W
Object_Name	Name of device	32 Bytes	R/W
Object_Type	The value is always "Device" for the device object	10 bit	R
Protocol_Objects_Supported	The enumeration of the supported object types	List	R
Protocol_Services_Supported	The enumeration of the supported services	List	R
Protocol_Version	BACnet protocol version number	1	R
Protocol_Revision	BACnet protocol revision number	14	R
Segmentation_Supported	This device does not support segmentation, so this always reads as "NO_SEGMENTATION (3)".	0...3	R
System_Status	Current physical and logical status supported: - OPERATIONAL (0) - DOWNLOAD_REQUIRED (2) (IF INT. EEPROM CONF. ERRORS) - NON_OPERATIONAL (4) (IF INT. I2C BUS ERRORS)	0...5	R
UTC_Offset	Offset to UTC time in case UTC time synchronization is used	-780...780	R/W
Vendor_Identifier	561		R
Vendor_Name	Vector Controls GmbH	String	R
Object_List	List of all objects currently implemented in the device	List	R

Analog Input Object

Property	Description / Property description	Range/Type	R/W
Object_Identifier	AI number	8bit	R
Object_Name	Name of the input, Assembled from template plus number	String	R
Description	Description of the input	16 Bytes	R/W
Preset_Value	Current value of input, writable only if out of service is set	Floating Point	R
Status_Flags	In_Alarm, Fault, Overridden, Out_Of_Service	Flags	R
Event_State	Always NORMAL	Flags	R
Reliability	NO_FAULT_DETECTED, NO_SENSOR, OVER_RANGE, UNDER_RANGE, OPEN_LOOP, SHORTED_LOOP, COMMUNICATION_FAILURE, UNRELIABLE_OTHER	List	R
Out_Of_Service	Writing to Out_Of_Service property is not supported	Flag	R
Units	Describes the units used. Degree Celsius or Fahrenheit has to be set by MV02.	8bit	R

Analog Value Object

Property	Description / Property description	Range/Type	R/W
Object_Identifier	AV number	8bit	R
Object_Name	Name of the value, Assembled from template plus number	String	R
Description	Description of the input	16 Bytes	R/W ⁽¹⁾
Preset_Value	Current value of input, writable only if out of service is set	Floating Point	R/W ⁽²⁾
Status_Flags	In_Alarm, Fault, Overridden, Out_Of_Service	Flags	R
Event_State	Always NORMAL	Flags	R
Out_Of_Service	Writing to Out_Of_Service property is not supported	Flag	R
Units	Describes the units used. Degree Celsius or Fahrenheit has to be set by MV02.	Coded Value	R

(1) Writable for objects with writable Present Value property only. (AVxx > AV11)

(2) Writable for AV indexes greater than 11.

Binary Value Object

Property	Description / Property description	Range/Type	R/W
Object_Identifier	BV number	8bit	R
Object_Name	Name of the input, Assembled from template plus number	String	R
Description	Description of the input	16 Bytes	R/W ⁽¹⁾
Preset_Value	True or False, writable only if out of service is set	ON, OFF	R/W
Status_Flags	In_Alarm, Fault, Overridden, Out_Of_Service	Flags	R
Event_State	Always NORMAL	Flags	R
Out_Of_Service	Writing to Out_Of_Service property is not supported	Flag	R

(1) Writable for objects with Instance Number greater than 100.

Multi State Value Object

Property	Description / Property description	Range/Type	R/W
Object_Identifier	MV number	8bit	R
Object_Name	Name of the input, Assembled from template plus number	String	R
Description	Description of the input	16 Bytes	R/W ⁽¹⁾
Preset_Value	Unsigned Integer	8bit	R/W
Status_Flags	In_Alarm, Fault, Overridden, Out_Of_Service	Flags	R
Event_State	Always NORMAL	Flags	R
Out_Of_Service	Writing to Out_Of_Service property is not supported	Flag	R
Number_Of_States	Unsigned Integer	8bit	R
State_Text	Array of strings	8bytes/state maximum	R

(1) Writable for objects with Instance Number greater than 100.

Description of available objects

Controller Information

Object	Name (8 Bytes)	Description	Range/Type	R/W
AV 00	#CtrlP	Number of control loops	8bit	R
AV 01	#BinIn	Number of binary inputs	8bit	R
AV 02	#uIn	Number of universal inputs	8bit	R
AV 03	#vIn	Number of virtual inputs	8bit	R
AV 04	#BinOut	Number of binary outputs	8bit	R
AV 05	#aOut	Number of analog outputs	8bit	R
AV 06	#Fan	Number of fan outputs	8bit	R
AV 07	#FIOut	Number of floating outputs	8bit	R
AV 08	#Alarm	Number of alarms	8bit	R
AV 09	#AuxFun	Number of auxiliary functions	8bit	R
AV 10	#Sched	Number of time schedules	8bit	R
AV 11	#PerSchd	Number of switching times / time schedule	8bit	R

Controller State

Object	Name (8 Bytes)	Description / Property description	Range/Type	R/W
BV 00	OpStOo	Operation state On - Off: Inactive / Active	BV	R/W
MV 00	OpStCoSt	Operation state Comfort - Standby: 1 = Comfort, 2 = Standby	MV	R/W
MV 01	OpStHeCo	Operation state Heat - Cool: 1 = Heat, 2 = Cool,	MV	R/W
MV 02	Degree	Operation state Celsius - Fahrenheit: 1 = Celsius, 2 = Fahrenheit	MV	R/W
BV 01	FanOnly	Operation state Fan Only: Not implemented in this version	BV	R/W
BV 02	Schedule	Operation state Time Schedules: Inactive / Active	BV	R/W
BV 03	AccOpMod	Enable access to operation modes	BV	R/W
BV 04	AccSp	Enable access to set points	BV	R/W
BV 05	AccMan	Enable manual control in cascade and for fan speeds	BV	R/W
BV 06	AccHeCo	Enable change of heating/cooling mode for 2 pipe systems	BV	R/W
BV 07	AccSchd	Enable access to time programs:	BV	R/W
MV 03	OpStOPMS	Operation State Master/Slave mode: "Master" / "Slave"	MV	R/W
MV 04	OpStWink	Operation State "Wink" function: "WinkON" / "WinkOFF"	MV	R/W
MV 05	OpStSWM	Operation State Summer/Winter mode: "Summer" / "Winter"	MV	R/W

Universal Inputs

Object	Name (8 Bytes)	Description	Description	
AI 101	UI-01	Universal Input 01	16bytes	R
AV 101	UI-01-OS	Universal Input 01 Offset (calibration = 01u6)	16bytes	R/W
AI 102	UI-02	Universal Input 02	16bytes	R
AV 102	UI-02-OS	Universal Input 02 Offset	16bytes	R/W
AI 103	UI-03	Universal Input 03	16bytes	R
AV 103	UI-03-OS	Universal Input 03 Offset	16bytes	R/W
AI 104	UI-04	Universal Input 04	16bytes	R
AV 104	UI-04-OS	Universal Input 04 Offset	16bytes	R/W

Virtual Inputs

Object	Name (8 Bytes)	Description	Description	
AI 105	VI-01	Virtual Input 01	16bytes	R/W
AV 105	VI-01-OS	Virtual Input 01 Offset	16bytes	R/W
AI 106	VI-02	Virtual Input 02	16bytes	R/W
AV 106	VI-02-OS	Virtual Input 02 Offset	16bytes	R/W
AV 107	VI-03	Virtual Input 03	16bytes	R/W
AV 108	VI-03-OS	Virtual Input 03 Offset	16bytes	R/W
AV 109	VI-04	Virtual Input 04	16bytes	R/W
AV 110	VI-04-OS	Virtual Input 04 Offset	16bytes	R/W

Alarms

Object	Name	Description	Description	R/W
MV 601	AL-01	Alarm 1: Not Active, Active, Need confirmation	16 bytes	R/W*
MV 602	AL-02	Alarm 2: Not Active, Active, Need confirmation	16 bytes	R/W*
MV 603	AL-03	Alarm 3: Not Active, Active, Need confirmation	16 bytes	R/W*
MV 604	AL-04	Alarm 4: Not Active, Active, Need confirmation	16 bytes	R/W*
MV 605	AL-05	Alarm 5: Not Active, Active, Need confirmation	16 bytes	R/W*
MV 606	AL-06	Alarm 6: Not Active, Active, Need confirmation	16 bytes	R/W*
MV 607	AL-07	Alarm 7: Not Active, Active, Need confirmation	16 bytes	R/W*
MV 608	AL-08	Alarm 8: Not Active, Active, Need confirmation	16 bytes	R/W*

*) Writable to "not active" only, if state is "not active, need confirmation";

Control Loops

Object	Name	Description	Description	R/W
MV 211	LP-01-ST	State of control loop: Disabled, Heating, Cooling		R
AV 211	LP-01-SSP	Saved set point	16bytes	R/W
AV 212	LP-01-CSP	Calculated set point		R
AV 213	LP-01-PROP	Proportional output		R
MV 212	LP-01-DO	Binary output: Stage OFF, Stage 1, Stage 2,		R

Digital Outputs in fan configuration

Object	Name	Description	Description	R/W
MV 412	DO-01-FAN	Binary Output 1 in fan mode: Fan Off, Fan Low, Fan Medium, Fan High	16 bytes	R
MV 413	DO-01-FAN-OV	Binary Output 1 override value		R/W
BV 511	DO-01-ALA	Fan feedback alarm		R
MV 411	DO-01-ST	Current State for Binary Output 1 – NORMAL/OVERRIDE		R

Digital Outputs in 3-point floating configuration

Object	Name	Description	Description	R/W
AV 411	DO-01-FLT	Binary Output 1 in analog mode – FLOATING	16bytes	R
AV 412	DO-01-FLT-OV	Binary Output 1 override value		R/W
MV 411	DO-01-ST	Current State for Binary Output 1 – NORMAL/OVERRIDE		R
AV 431	DO-03-FLT	Binary Output 3 in analog mode – FLOATING	16bytes	R
AV 432	DO-03-FLT-OV	Binary Output 3 override value		R/W
MV 431	DO-03-ST	Current State for Binary Output 3 – NORMAL/OVERRIDE		R

Digital Outputs in PWM configuration

Object	Name	Description	Description	R/W
AV 413	DO-01-PWM	Binary Output 1 in analog mode PWM	16bytes	R
AV 414	DO-01-PWM-OV	Binary Output 1 override value		R/W
MV 411	DO-01-ST	Current State for Binary Output 1 – NORMAL/OVERRIDE		R
AV 423	DO-02-PWM	Binary Output 2 in analog mode PWM	16bytes	R/W
AV 424	DO-02-PWM-OV	Binary Output 2 override value		R/W
MV 421	DO-02-ST	Current State for Binary Output 2 – NORMAL/OVERRIDE		R
AV 433	DO-03-PWM	Binary Output 3 in analog mode PWM	16bytes	R
AV 434	DO-03-PWM-OV	Binary Output 3 override value		R/W
MV 431	DO-03-ST	Current State for Binary Output 3 – NORMAL/OVERRIDE		R
AV 443	DO-04-PWM	Binary Output 4 in analog mode PWM	16bytes	R
AV 444	DO-04-PWM-OV	Binary Output 4 override value		R/W
MV 441	DO-04-ST	Current State for Binary Output 4 – NORMAL/OVERRIDE		R
AV 453	DO-05-PWM	Binary Output 5 in analog mode PWM	16bytes	R
AV 454	DO-05-PWM-OV	Binary Output 5 override value		R/W
MV 451	DO-05-ST	Current State for Binary Output 5 – NORMAL/OVERRIDE		R

Digital Outputs in binary configuration

Object	Name	Description	Description	R/W
BV 411	DO-01-BIN	Binary Output 1 in binary mode	16bytes	R
BV 412	DO-01-BIN-OV	Binary Output 1 override value		R/W
AV 511	DO-01-RT	Run time totalizer		R
BV 511	DO-01-ALA	Run time limit exceeded		R
MV 411	DO-01-ST	Current State for Binary Output 1 – NORMAL/OVERRIDE		R
BV 421	DO-02-BIN	Binary Output 2 in binary mode	16bytes	R
BV 422	DO-02-BIN-OV	Binary Output 2 override value		R/W
AV 521	DO-02-RT	Run time totalizer		R
BV 521	DO-02-ALA	Run time limit exceeded		R
MV 421	DO-02-ST	Current State for Binary Output 2 – NORMAL/OVERRIDE		R
BV 431	DO-03-BIN	Binary Output 3 in binary mode	16bytes	R
BV 432	DO-03-BIN-OV	Binary Output 3 override value		R/W
AV 531	DO-03-RT	Run time totalizer		R
BV 531	DO-03-ALA	Run time limit exceeded		R
MV 431	DO-03-ST	Current State for Binary Output 3 – NORMAL/OVERRIDE		R
BV 441	DO-04-BIN	Binary Output 4 in binary mode	16bytes	R
BV 442	DO-04-BIN-OV	Binary Output 4 override value		R/W
AV 541	DO-04-RT	Run time totalizer		R
BV 541	DO-04-ALA	Run time limit exceeded		R
MV 441	DO-04-ST	Current State for Binary Output 4 – NORMAL/OVERRIDE		R
BV 451	DO-05-BIN	Binary Output 5 in binary mode	16bytes	R
BV 452	DO-05-BIN-OV	Binary Output 5 override value		R/W
AV 551	DO-05-RT	Run time totalizer		R
BV 551	DO-05-ALA	Run time limit exceeded		R
MV 451	DO-05-ST	Current State for Binary Output 5 – NORMAL/OVERRIDE		R

Smart Sensors and Controls Made Easy!

Quality - Innovation – Partnership

Vector Controls LLC
USA

infous@vectorcontrols.com
www.vectorcontrols.com

