

FUP XL 2

Installation Manual (Last updated 2016-08-31)

Version 2.0

Technology for intelligent buildings

DEOS.AG

DEOS AG
Birkenallee 76
48432 Rheine
Germany

+49 5971 91133-20
+49 5971 91133-2995
info@deos-ag.com
www.deos-ag.com

© Copyright 2016 DEOS AG

This manual was prepared with the utmost care. DEOS AG, however, is not liable for damage or losses resulting from or in connection with errors, ambiguities or other circumstances. Errors and changes excepted.

Note:

We are pointing out that the software and hardware names and brand names of the respective companies used in this manual are generally protected by brand, trademark or patent laws.

Table of Contents

Part A – Introduction and Commissioning

1. Introduction.....	2
About this manual	2
General Icons and Characters	2
System description	3
Functional modules	3
Basic modules	3
Expansion modules	3
System requirements	4
Operating systems	4
PC components	4
2. Commissioning	5
Installation.....	6
Updates	12
Starting the software for the first time	13
Settings	15
Settings – General.....	15
Settings – Options	16

Part A

Introduction and Commissioning

1. Introduction

About this manual
System description
System requirements

About this manual

This manual is intended for system administrators and provides support for installing and commissioning the software. You must have knowledge about the product's special features and where it is used. You must also have knowledge of the Windows operating system and control technology as well as IT experience.



The information provided in this document does not promise any technical features or intended applications of this software and is thus nonbinding.

General Icons and Characters

General icons and characters mark additional comments as additions to the basic contents of this manual.



INFORMATION / EXPLANATION / TERM / DEFINITION



NOTE



ATTENTION!



TIP



EXAMPLE



READ MANUAL



DETAIL



LEGEND



NEW FUNCTION

System description

FUP XL is the engineering tool for creating and operating controller programs for all OPEN EMS controller systems.

Controller programs for OPEN EMS control systems are represented with graphs, i.e. without knowledge of a programming language, on function pages referred to as FUP pages. Functional modules ease the introduction into graphic programming. Prepared macros facilitate programming and reduce programming time. With just the click of a button, the software creates programs that can be loaded in the corresponding controllers. The controllers are organized in projects for easy and clear management. The working area provides you with quick access to your projects and programmed controllers. The detailed view continuously displays information about the selected working area. The output window lists possible errors when creating the controller programs.

When creating controller programs, individual text-guided and/or graphic layouts can be simultaneously prepared using integrated editors. The layouts are automatically linked to the created controller programs and are used for operating in DEOS proprietary visualization programs, such as OPENweb ControlPanel or OPENview, for example. The simulation enables you to easily and effectively test your created controller programs.

Functional modules

Basic modules

- **FUP XL:**
Software for managing and organizing projects, controllers and the individual FUP pages.
- **FUP page editor:**
The image of a logical, functional controller program is developed using the FUP page editor. Fixed or variable assignments are plotted and interlinked using modules, lines and basic modules.
- **HTML editor:**
The HTML editor is used to create the layout for representing HTML pages in the proprietary visualization programs, such as the OPENweb ControlPanel. Each text element can be positioned and adjusted as needed.
- **Graphic editor:**
The graphic editor is used to create the layout for representing graphic pages in the proprietary visualization programs, such as the OPENweb ControlPanel.

The TUP editor is used to create the page layouts for the Touch User Panel (TUP). Text as well as graphic elements can be entered here. Each element can be positioned and adjusted as needed.

Expansion modules

- **Macro library:**
The macro library (MacLib) is fully integrated into this development environment. During programming, the dynamic visualizations are automatically created for a number of standard MCR as well as HVAC systems as well as flexible custom solutions. The macro library allows you to quickly create programs using a standardized process.
- **Templates:**
The templates are based on approx. 900 macros contained in the macro library (MacLib) and reduce programming times by up to 90%. They offer all the proven advantages from the macro library, such as the complete and graphic visualization of the system images, a dynamic heating curve display, set-point optimization for heating and cooling systems as well as other well-known, technical functions.




NEW System requirements

To use the engineering tool software application for OPEN EMS controller systems, the corresponding requirements concerning the operating system and the corresponding PC components must be satisfied.


Operating systems


- Windows 7 Professional SP1 (64-bit)
- Windows 7 Ultimate SP1 (64-bit)
- Windows 8/8.1 Professional (64-bit)
- Windows 8/8.1 Enterprise (64-bit)
- Windows 10 Professional (64-bit)
- Windows 10 Enterprise (64-bit)
- Windows Server 2008 R2
- Windows Server 2012 and Windows Server 2012 R2

 The software can only be installed on PCs with a 64-bit version of Windows.

PC components

PC components	Requirement (minimum)	Recommendation
Processor	Dual core	Quad core
Web Browser	Internet Explorer 10	Internet Explorer 11
Drive	DVD-ROM	DVD-ROM
Working memory	8 GB RAM	≥ 12 GB RAM
Free hard drive space (File system: NTFS)	10 GB	50 GB SSD
Screen / graphic card	1024 x 768 pixels, true color	Full HD, true color
Interfaces	1 free USB port	2 free USB ports, serial interface or adapter (USB↔serial)
	The following is required, depending on the OPEN components: for OPEN SRU: 1 additional USB port For OPEN EMS / COSMOS OPEN: TCP/IP (network card)	
Additional software	.Net Framework 3.5	

 **Firewall:** If the firewall prevents the program from starting, the guidelines of the IT network must be checked and adapted if necessary.

 If Internet Explorer does not fulfill the necessary conditions, an appropriate update can be run via the Microsoft website. For this update, the product key of the operating system should be available.

2. Commissioning

Installation

Updates

Starting the software for the first time

The following sections describe how to install, update and start the software for the first time.



Carefully read this section before installing the software.



All other programs should be closed before you start installing the software. You can replace specific system files without restarting the program.



Only connect the hardware dongle after the software is installed on your PC.



The installation is not automatically started.



The installation is completely canceled if you click the "Cancel" button during the installation.



During the installation, the system checks whether there are any files that have not yet been deleted after the software was deinstalled. If this is the case, the installation is aborted and the system must be rebooted.



All messages during the installation process must be carefully read and observed.

Installation



Before you can install the software, the operating system must be restarted.

Procedure:

1. Select the installation file.

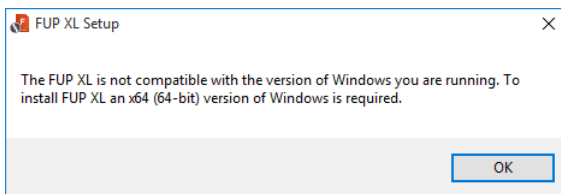


The designation of the installation file may have a different version number.

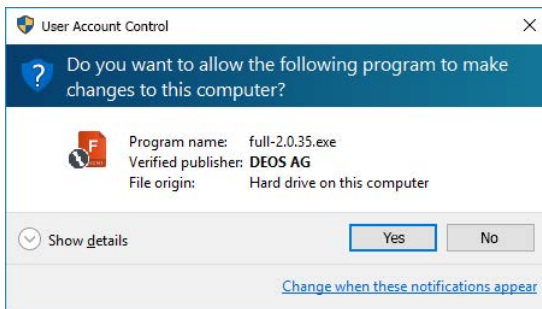
2. Start the installation by double-clicking the installation file or the corresponding icon.



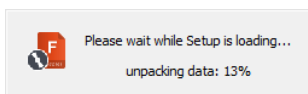
The file can only be installed on PCs with a 64-bit version of Windows. If the software is installed on a PC with a 32-bit version of Windows, **the installation process is canceled after the prompt is confirmed and it is not continued.**



3. Confirm the query of the user account control asking whether program changes are to be allowed on the computer with "Yes".



4. The setup program is loaded.

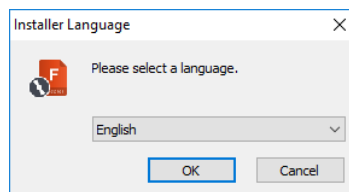
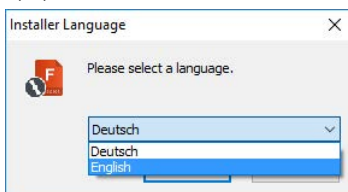


5. There is a selection of various translations available for the language setting of the setup program. Select the desired language via the drop-down list and confirm with "OK".



The selected language is initially also adopted for setting the software.

a) b)



6. The setup program starts. To continue with the installation, click "Next".

a)



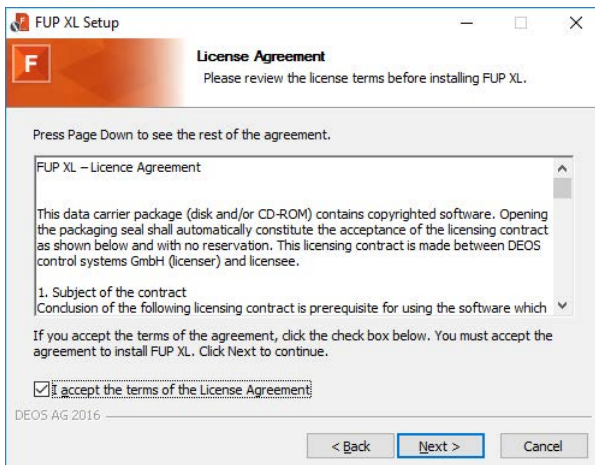
b)



7. You should carefully read the License Agreement. To confirm that you accept the license agreement, click the "I accept the terms of the License Agreement" checkbox. To continue with the installation, click "Next".



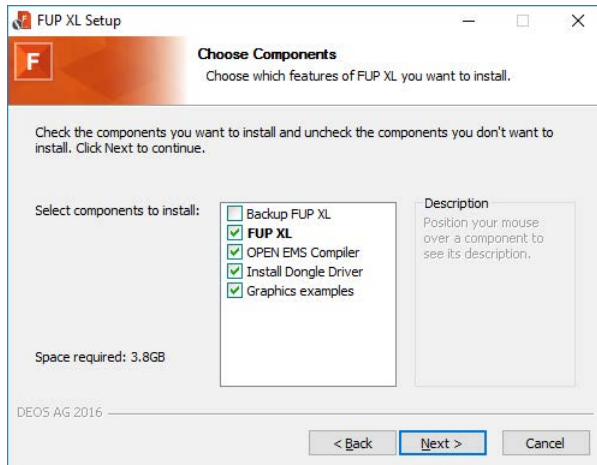
You have to accept the license agreement to install the software.



8. Define the components to be installed. To continue with the installation, click "Next".



If the components must be installed, the checkmark is already set and the checkbox is disabled.



Backing up FUP XL:

Create a backup of any previous version of this software already installed.



This option can only be activated if there is already a previous version of this software installed on the PC.

FUP XL:

Install the main software components.



If this software database is already available on the PC, e.g. because a version of this software was installed at an earlier point in time, the checkmark is not set and the checkbox is deactivated. In this case, the available database is used to save the data.

OPEN EMS Compiler:

Install the compiler tools for OPEN EMS.

Dongle driver:

Installs the driver for the dongle.



The dongle driver must be installed. If this option is not selected, the dongle driver must be subsequently installed.

Example graphics:

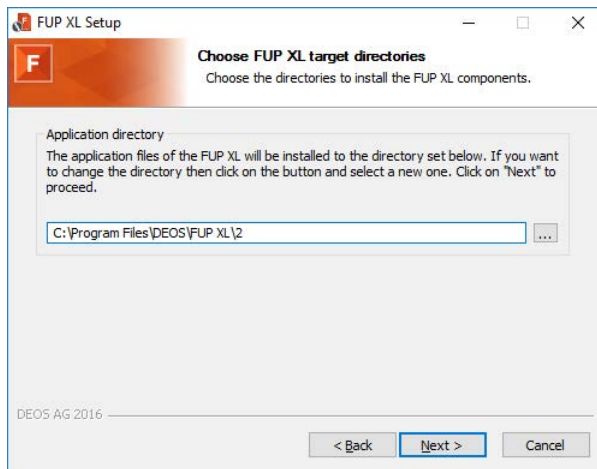
Install example graphics for the graphic visualization.

- Define the target directories for the software components that you previously selected. The program directory is already preset. To continue with the installation, click "Next".



To install the corresponding data in another directory, click the button and select the desired directory.

a)



Program directory:

Files that are necessary for the software to function are installed in the program directory. (default: C:\Program Files\DEOS\FUP XL\2)

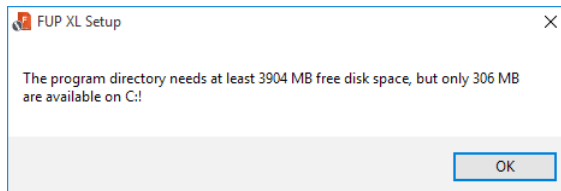


The program directory must **not** be saved in the same directory of a previous version of this software, if one is installed.

b)



If the disk space required for the program directory is not sufficient, the installation process cannot be continued until there is sufficient disk space available. Details on this are provided in section „System requirements“ on page 4.

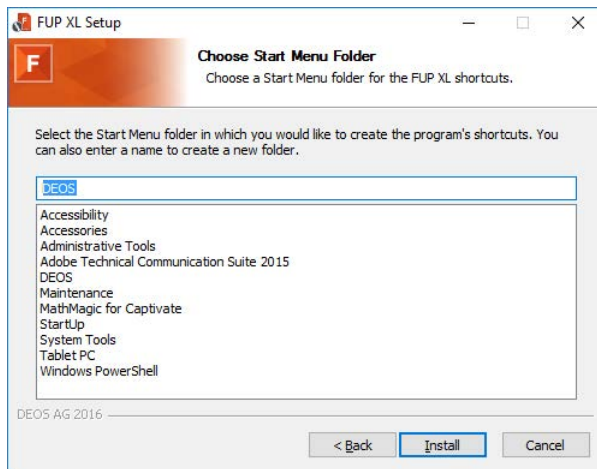


- Select the Windows start menu folder for the program links. The name of the Windows start menu folder is already preset. To create a new folder, enter the desired name. To continue with the installation, click "Next". The installation status is displayed according to the progress of the operation.

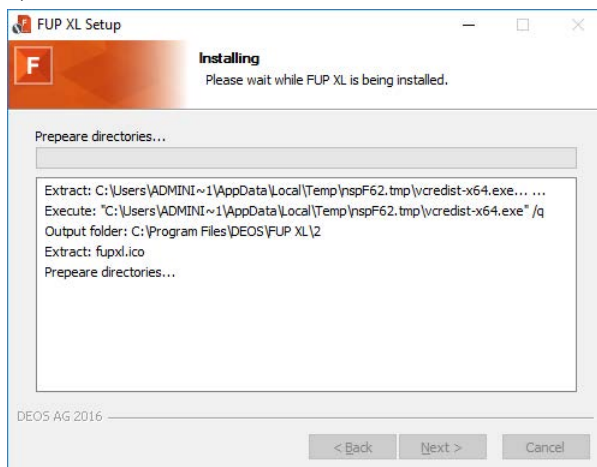


This procedure can take a minute.

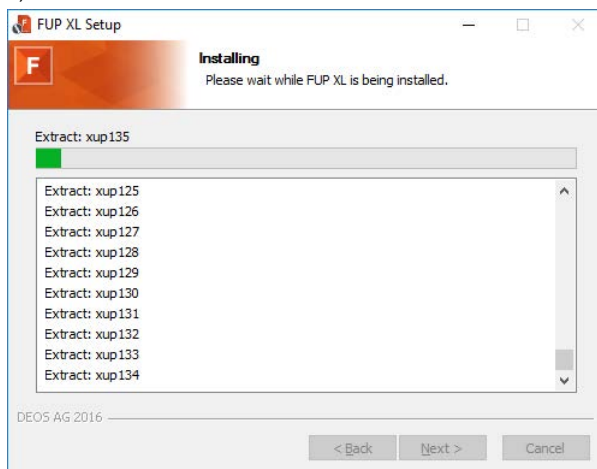
a)



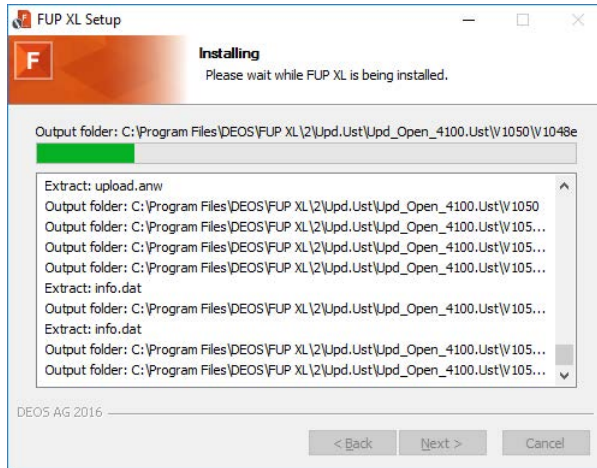
b)



c)

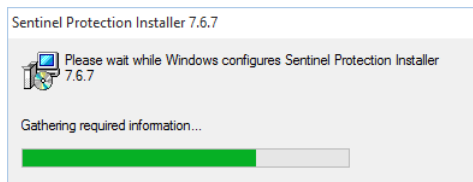


d)

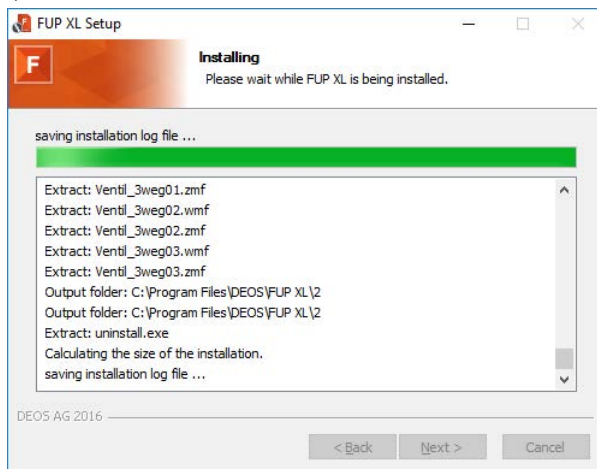


e)

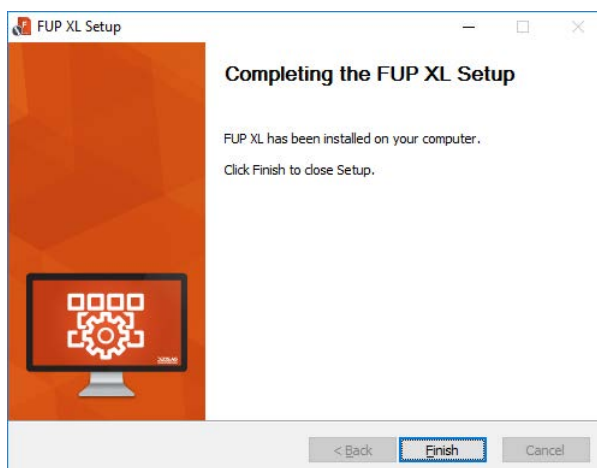
The dongle drive is optionally installed. (See section 8)



f)



11. To close the installation wizard and complete the installation, click "Finish".



Updates

Updates can be downloaded in the download area of our homepage at any time.



A corresponding earlier version of this software must be installed to successfully upgrade it.

Starting the software for the first time

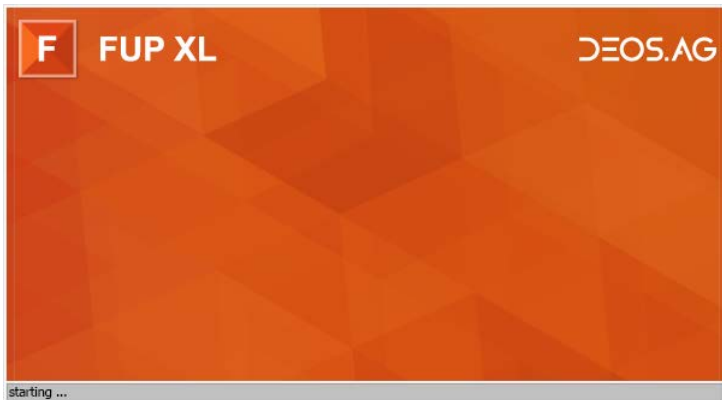
Procedure:

1. After you have successfully installed the software, the hardware dongle must be connected to the PC.



The system checks for the hardware dongle when the program starts. The software functions can only be used to a limited extent if the hardware dongle is not registered. In this case, communication with the controller is not possible. If there is no registered hardware dongle connected to the PC, a corresponding message is displayed.

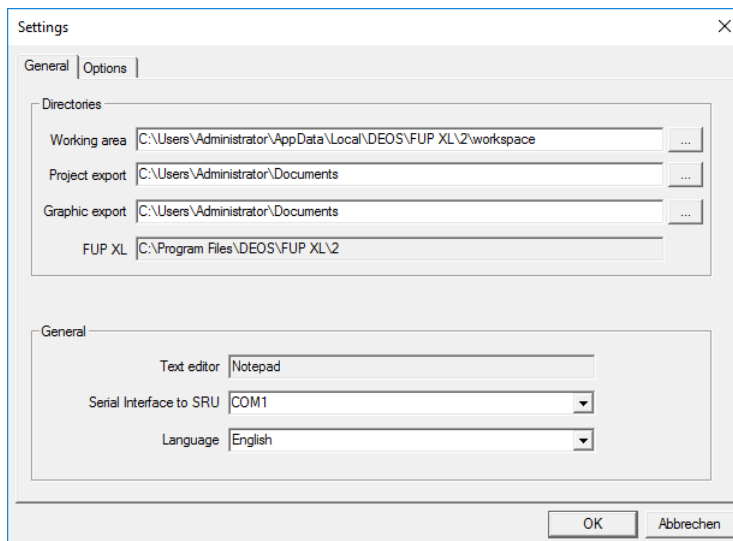
2. Start the software via the Windows start menu "Start → All apps → DEOS → FUP XL 2" (default path).



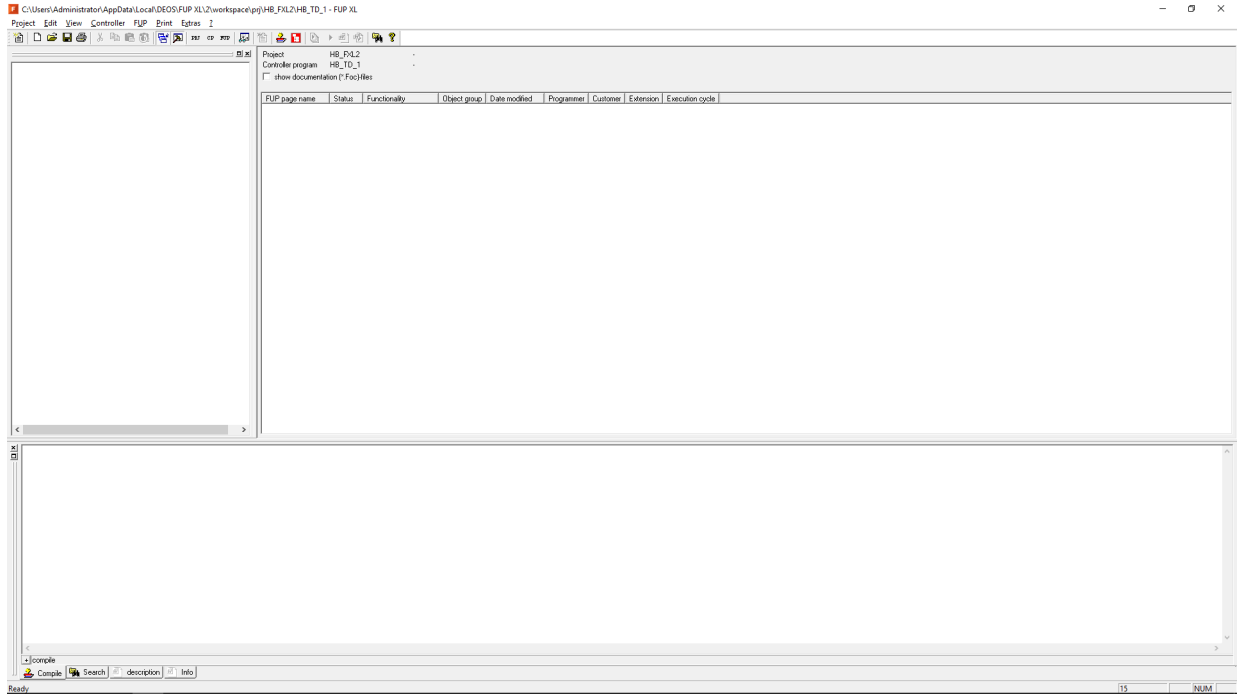
3. When starting the software for the first time, the dialog for creating the software opens in the language that was selected for the installation process. Adjust the software settings for the requirements of the individual working environment and confirm with "OK".



Details on this are provided in section „Settings“ on page 15.



4. The software opens and the corresponding activated options are then available.



Settings

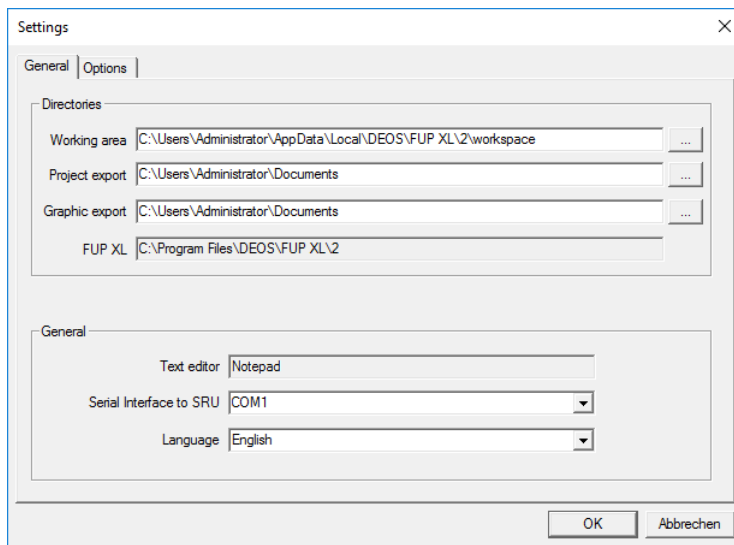
Settings – General

Procedure:

1. Navigate to the menu bar and select the "Extras → Options" menu item. The "Settings" dialog opens. To display and edit the general settings, open the "General" tab. Adjust the settings for the requirements of the individual working environment and confirm with "OK".



To save the data in another directory, click the button and select the desired directory.



Directories:

Working area:

Path information for saving the project data.

(default: C:\Users\ "User name" \AppData\Local\DEOS\FUP XL\2\workspace)



The project data that was created with FUP XL 2 must **not** be saved in the same directory of a previous version of this software, if one is installed.

Project export:

Path information for saving the project export.

(default: C:\Users\ "User name" \Documents)

Graphic export:

Path information for saving the graphic export.

(default: C:\Users\ "User name" \Documents)

FUP XL:

Display of the program directory.

(default: C:\Program Files\DEOS\FUP XL\2)



The program directory must **not** be saved in the same directory of a previous version of this software, if one is installed.

General:

Text editor:

Display of the text editor.



The character set "UTF8 without BOM" must be entered in the text editor.

- 1 BOM (Byte Order Mark) is the Unicode character at the beginning of the data stream used as a code to define the byte order.



Serial interface to the SRU:

Selection of the serial interface for connecting an OPEN SRU (Single Room Unit).
(default: COM1)

Language:

Selection of the software language.



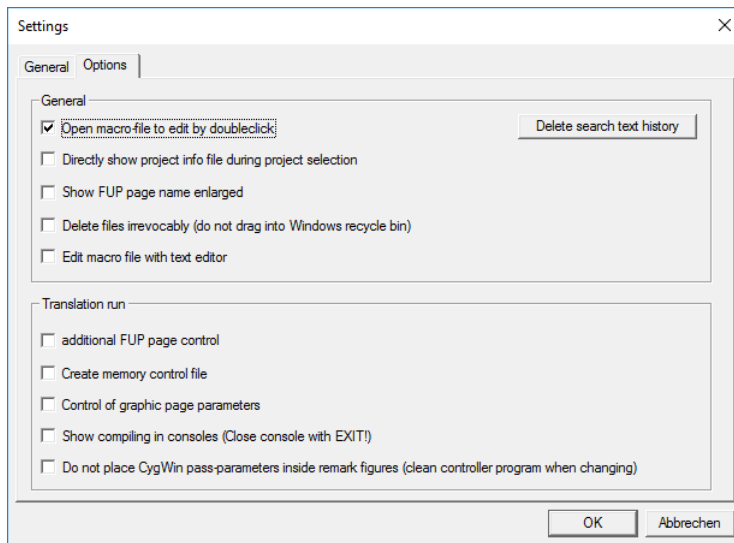
Changes only take effect after the software is restarted.

Settings – Options

1. Navigate to the menu bar and select the "Extras → Options" menu item. The "Settings" dialog opens. To display and edit the optional settings, open the "Options" tab. Activate the desired options by selecting checkbox and confirm with "OK".



Changes only take effect after the software is restarted.



General:

Delete search text history:

The search text history is deleted.

Open macro-file to edit by doubleclick

If this option is activated, the definition file of a macro function page (macro FUP page) is opened by double-clicking the respective macro FUP page in the text editor.
(default: activated)



The text editor used to open the definition file must be defined under "Text editor" on the "General" tab of this dialog.

Directly show project info file during project selection

If this option is activated, the project information file opens when a project is selected.
(default: deactivated)

Show FUP page name enlarged:

If this option is activated, the function page name (FUP page name) is displayed in the working area in capital letters.
(default: deactivated)

Delete files irrevocably (do not drag into Windows recycle bin):

If this option is activated, the corresponding selected files are irrevocably deleted by the system and **not** moved into the Windows recycle bin.
(default: deactivated)

Edit macro file with text editor:

If this option is activated, the macro definition file of a macro function page (macro FUP page) opens in the text editor.

(default: deactivated)



The text editor used to open the definition file must be defined under "Text editor" on the "General" tab of this dialog.

Translation run:

Additional FUP page control

If this option is activated, unknown ASCII characters in the function page file (FUP file) are indicated by an acoustic signal. The positioning of this character is specified in an additional dialog. (default: deactivated)

(default: activated)



If this option is activated, the translation process may under certain circumstances be delayed. We therefore recommend temporarily activating this option – as needed.

Create memory control file:

If this option is activated, a debug file is generated during the translation. (default: deactivated)

Control of graphic page parameters:

If this option is activated, any control parameters that were defined for graphic elements are checked. (default: deactivated)

(default: deactivated)

(default: activated)



If this option is activated, the translation process may under certain circumstances be delayed. We therefore recommend temporarily activating this option – as needed.

Show compiling in consoles (close console with EXIT):

If this option is activated, the outputs of the individual programs are not forwarded to the output. Instead, the programs are started directly in the consoles. An open console must then be closed with "Exit" to perform the compilation process. (default: deactivated)

Do not place CygWin pass parameters inside remark figures (clean controller program when changing):

If this option is activated, the program parameters are not placed in the remark figures during the compilation process. (default: deactivated)



A C compiler is called up to create the control program. This C compiler is automatically called up via the PC operating system's command prompt window when compiling a controller program. fCommands are usually placed in the command prompt window in the remark figures. If, under certain circumstances, there are consistency problems when using these remark figures, the program parameters are not placed in the comment figures during the compilation process – when this option is activated.